

## **Net Computing(JF-ETP-310B) User Manual**

# Contents

- 1. Product Introduction** ..... 4
  - 1.1 Product pictures ..... 4
  - 1.2 Net Computing cloud terminals product specification ..... 4
  - 1.3 Net Computing cloud terminals Deployment Diagram..... 5
  - 1.4 System requirement..... 5
    - Server ..... 5
    - Network..... 5
    - Selecting server system..... 5
- 2. Configuration for terminal server** ..... 6
  - 2.1 open terminal driver CD..... 6
  - 2.2 installing the patch for Multi-user terminal machine ..... 7
  - 2.3 Add users for terminal ..... 10
- 3. Startup Net Computing cloud terminals** ..... 11
  - 3.1 Preparation before starting up ..... 11
  - 3.2 Installing Net Computing cloud terminals..... 11
    - 3.2.1 Prepare before the installing ..... 11
    - 3.2.2 Express setup for Net Computing cloud terminals..... 11
  - 3.3 Operation about the Net Computing cloud terminals..... 12
  - 3.4 Mode changing ..... 13
    - 3.4.1 Terminal mode to Mini PC independent operation mode..... 13
    - 3.4.2 Desktop Mini PC independent operation mode to terminal mode ..... 15
- 4. Operating guide in terminal mode** ..... 15
  - 4.1 Menus of common terminal mode ..... 15
  - 4.2 Server connection..... 16
  - 4.3 Options ..... 17
    - 4.3.1 Setup..... 18
    - 4.3.2 System information ..... 20
- 5. System options** ..... 20
  - 5.1 Setting control panel..... 21
  - 5.2 IP Address Settings ..... 21
    - Manually configure the network..... 22
    - Automatically obtain IP address: ..... 22
  - 5.3 Setting Terminal Name ..... 23
  - 5.4 WIFI settings ..... 25
  - 5.5 Change Password..... 26
  - 5.6 Startup settings ..... 26
    - 5.6.1 The terminal mode for thin clients, as mentioned earlier..... 27
    - 5.6.2 Local Desktop ..... 27
    - 5.6.3 Video mode..... 28
    - 5.6.4 Two Icons interface..... 29
  - 5.7 Connect server automatically restart computer ..... 30
  - 5.8 Display resolution setting..... 31

5.9 Mac address setting.....	31
5.10 sound setting.....	32
5.12 Monitor screen setting.....	33
5.13 Change the boot screen.....	36
5.14 System information.....	37
5.15 Setup Printer.....	38
5.16 Go to the desktop.....	38
5.17 Language selection.....	39
5.18 Clear all settings.....	39
5.19 Save settings.....	39
5.20 Restart Terminal.....	39
<b>6. Operating Guide in Mini PC mode.....</b>	<b>39</b>
6.1 Remote Desktop Connection.....	40
6.2 Mobile disk or U disk.....	41
6.3 display properties.....	41
6.4 screen keyboard.....	42
6.5 touch kit setting.....	44
6.6 Excel Viewer (this function has canceled).....	44
6.7 Image Viewer (this function has canceled).....	45
6.8 Internet Explorer.....	45
6.9 Microsoft WordPad.....	45
6.10 Wireless network setting.....	45

## 1. Product Introduction

### 1.1 Product pictures



Figure 1-1-1 Appearance of Net Computing cloud terminals(JF-ETP-310B)

The series of Net Computing cloud terminal is very unique network computer, its appearance as shown above. It can not only operate in Mini PC independently for web surfing, but also create B/S framework computer network, operating network business with innovation cost advantages. The unit price of Net Computing cloud terminals equivalent to 10%-20% of traditional PC, and the use of integrated design of hardware and software that help maintain and easy management. Terminal Server unified management, upgrade and maintenance work in the service side, really close to the terminal "zero" maintenance. Compact body, no cooling fan, no noise, low radiation, green and healthy environment.

### 1.2 Net Computing cloud terminals product specification

Real panel:



Figure 1-2-1

### 1.3 Net Computing cloud terminals Deployment Diagram

There are two working mode on Net Computing cloud terminals----terminal mode and Mini PC mode. Under terminal mode, it needs to connect to the server and operate. And under the Mini PC mode, it can be used as a small computer to realize your simple work. Please check the Deployment Diagram as showed below:



Figure 1-3-1 Net Computing cloud terminals Deployment Diagram

### 1.4 System requirement

#### Server

operating system: Linux, Unix;  
 Microsoft Windows XP, Windows Vista, Windows 7;  
 Windows 2003 Server, Windows 2008server。

Selecting system for the server, as determined by the requirement of running applications

#### Hardware requirement:

Depending on what application software system and how many Net Computing cloud terminals running.

#### Applications:

Any applications which support multi-session (normally running in Linux/Unix or Windows server)

open ports: RDP: 3389

VMware View: 443/3389

VNC: 5900

XDMCP: 177

Telnet: 23

SSH: 22

#### Network

Protocol: TCP/IP, RDP, VDI, VNC, XDMCP, Telnet, SSH。

connecting ways: LAN、dial、DSL、Cable Modem、Wi-Fi。

Min Mbps: 28.8K bps。

#### Selecting server system

Regarding Windows application, as Windows XP/Windows 7 is not special server system, there will have stability problems for most users' possibility. We recommend using Windows 2003 Server, Windows 2008server as background server if there are more than 20 users.

## 2. Configuration for terminal server

### 2.1 open terminal driver CD

1. Put the CD into the drive, let it autorun, or open the root of the CD, click "autorun.exe".

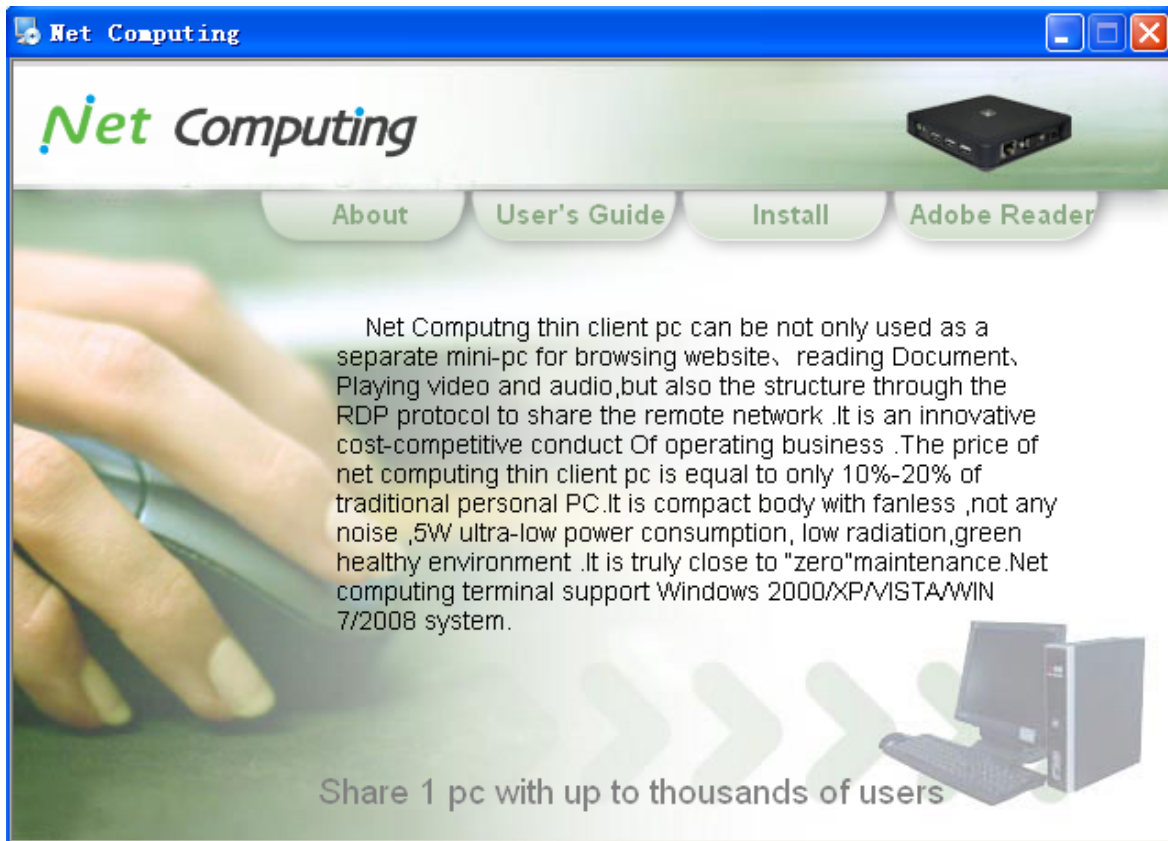


Figure 2-1-1

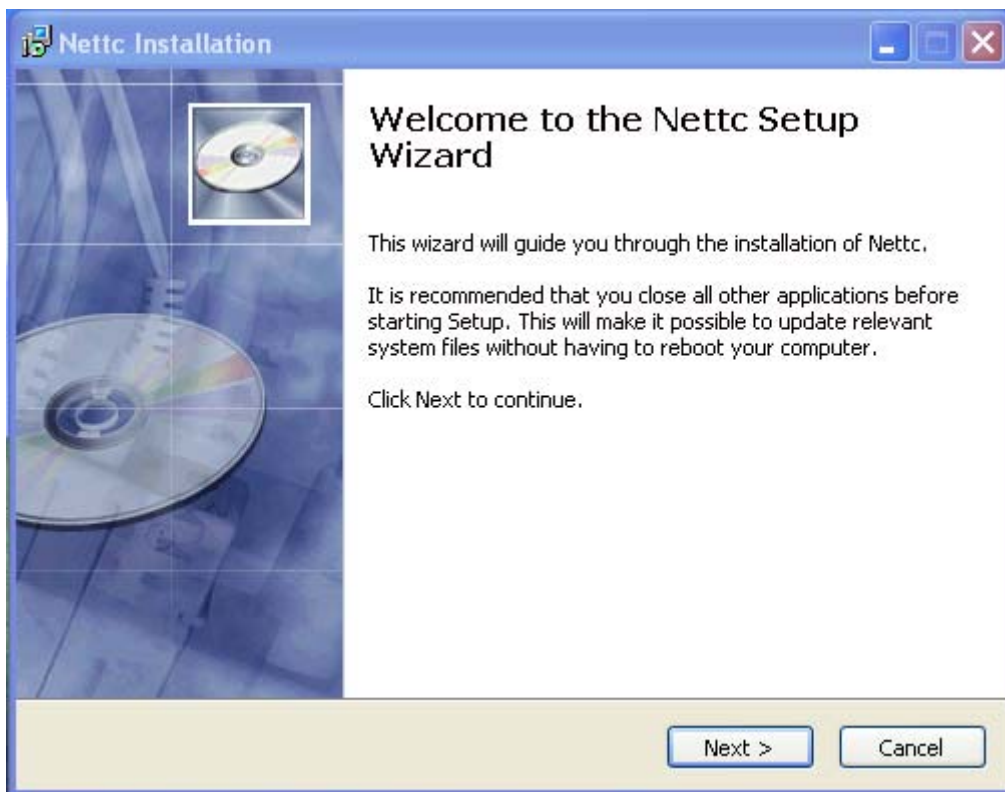
2. Click **Install**; go into related product software and product manual menu.



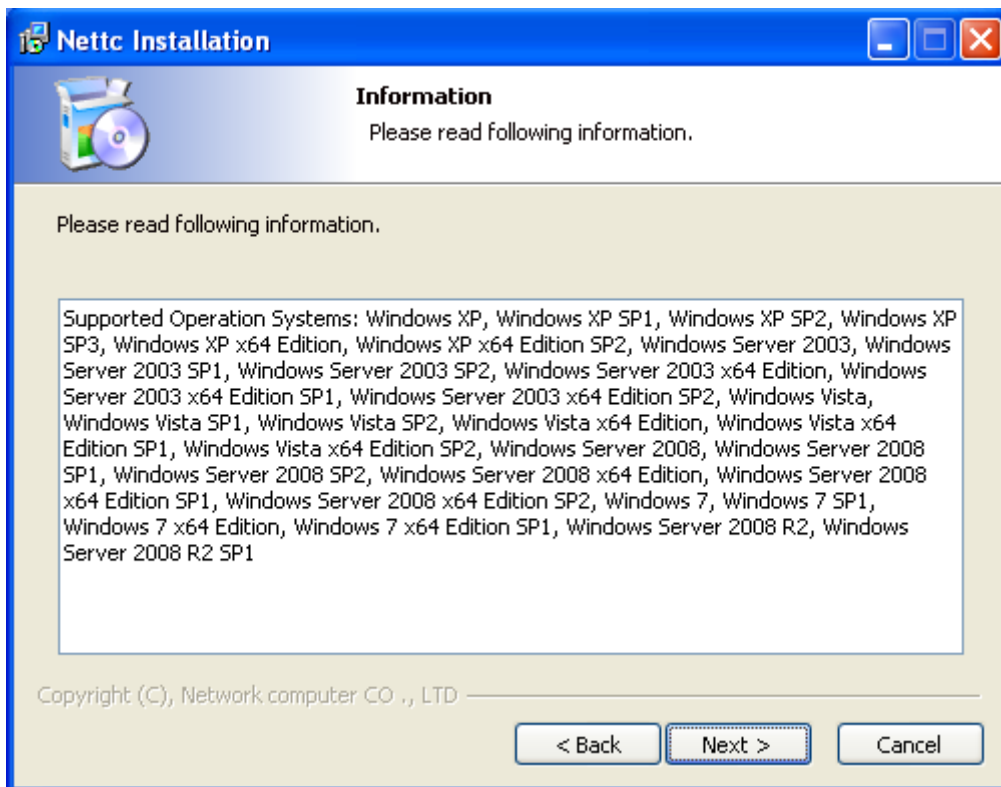
Figure 2-1-2

## 2.2 installing the patch for Multi-user terminal machine

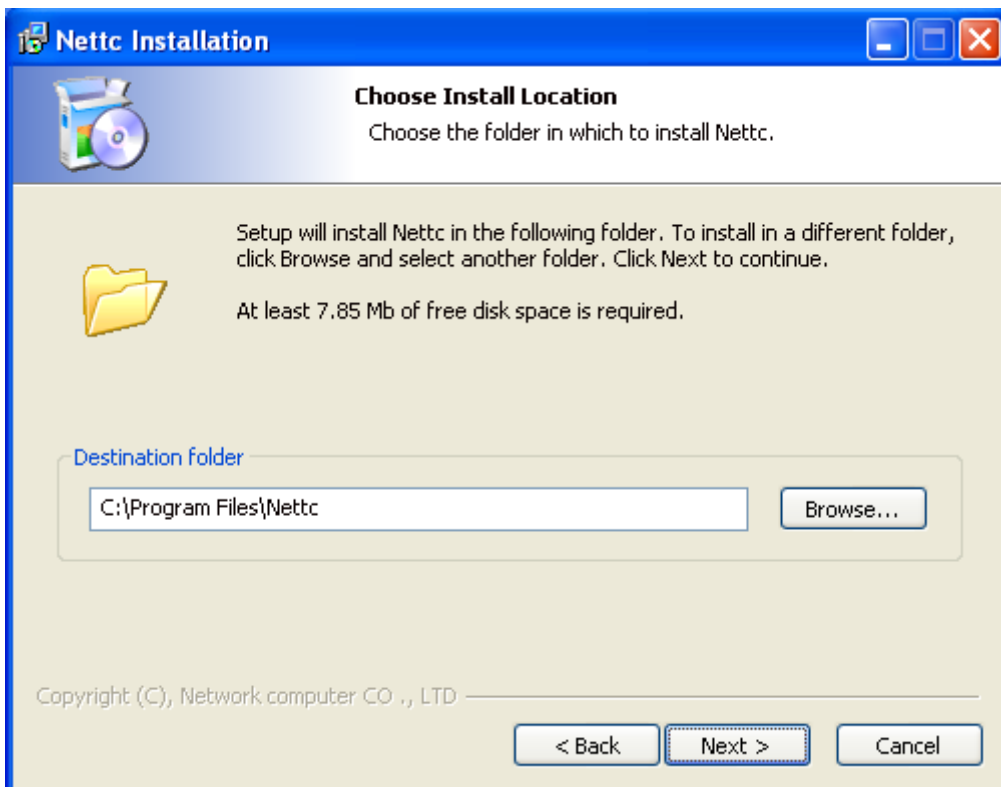
Click "Install", follow these steps to install:



Click "next"

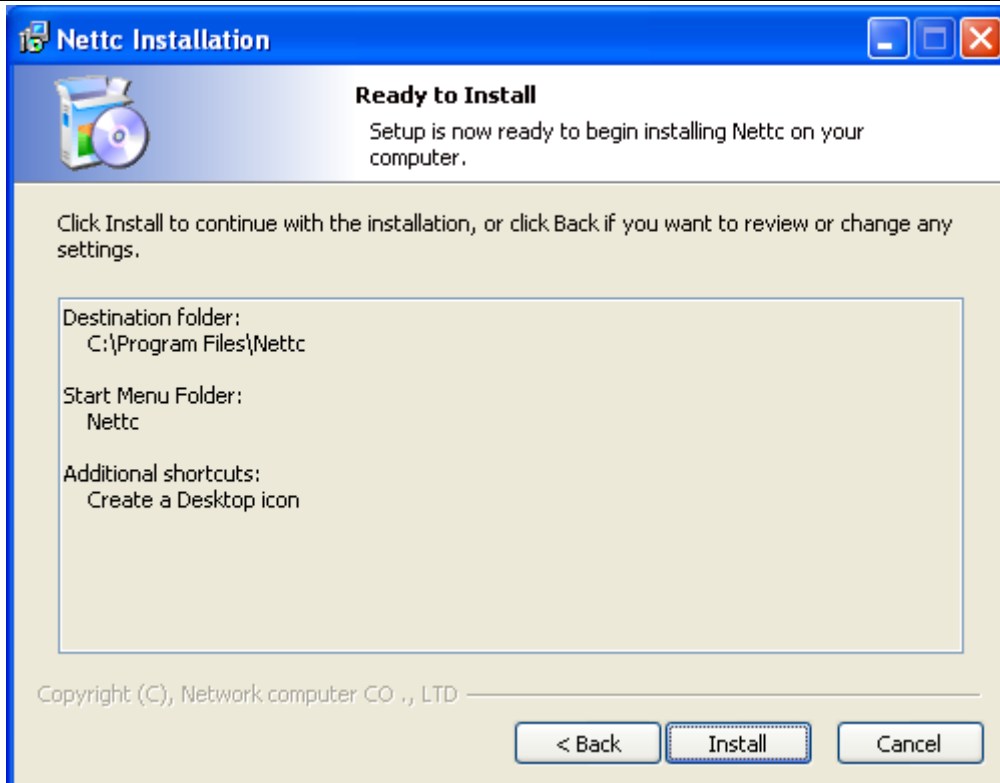


click "next"

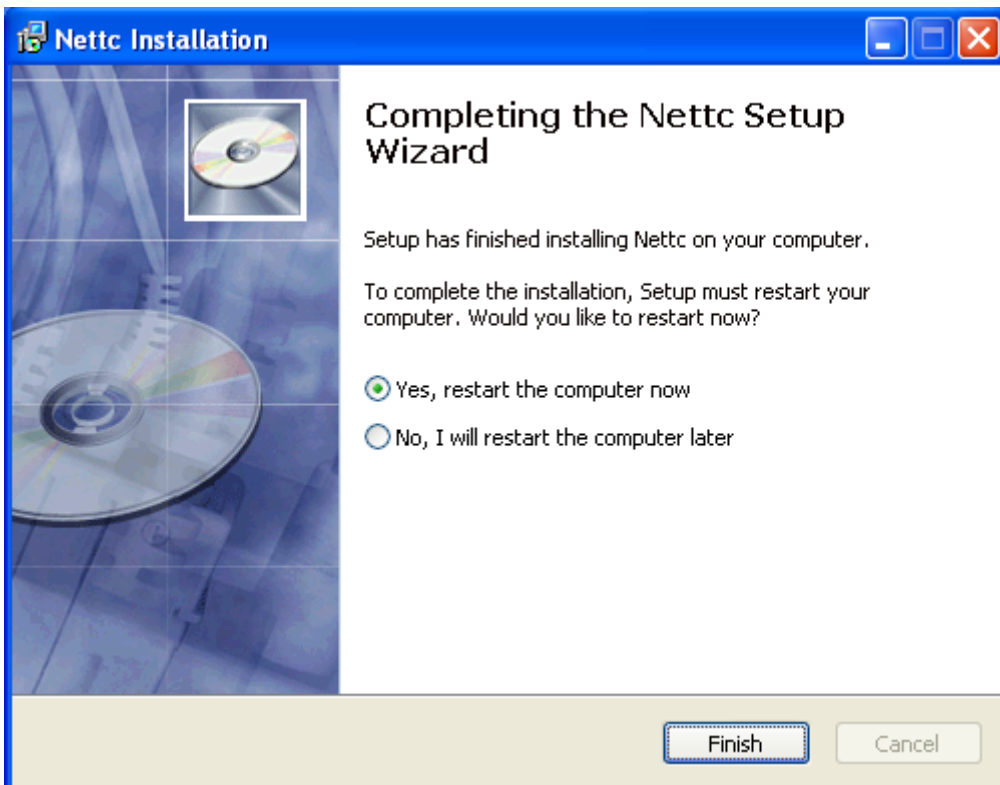


Click "Next" (default installation), can change the installation directory.





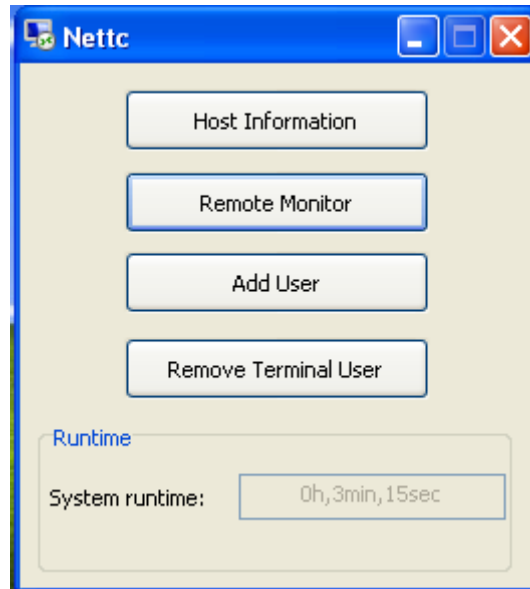
Click "Install"



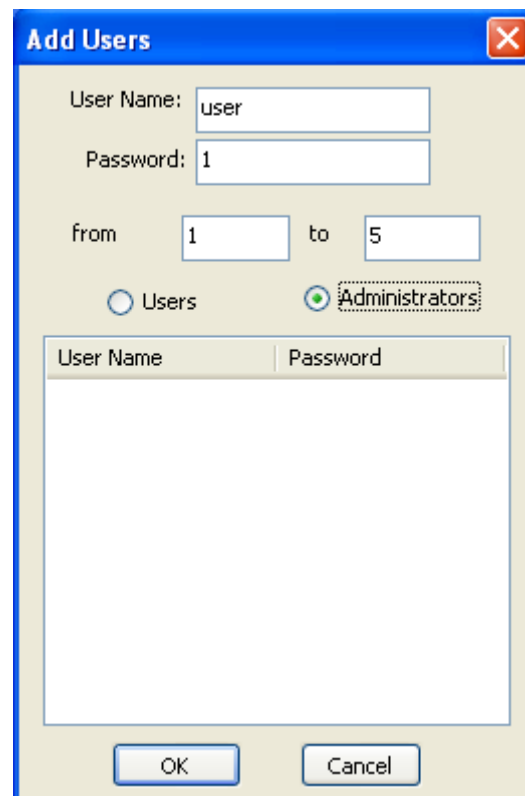
Click "Finish", the installation is successful after restart the computer.

### 2.3 Add users for terminal

Double-click "Nettc" on the host computer's desktop.



Click "Add Users"



As figure, will add five users (user1, user2, user3, user4, and user5), all passwords is "1", click "OK".

After adding, click "Close".

## 3. Startup Net Computing cloud terminals

### 3.1 Preparation before starting up

In order to use the Net Computing cloud terminals, you need to prepare some peripherals. First you need to prepare display output equipment, you can select variety of output devices with VGA interface, including the display 、 projector and several LCD TV etc.

Network terminal function is the main function of the Net Computing cloud terminals, so the network connection is very important .You need to prepare the network interface. Please prepare the clear network interface. In order to operate the Net Computing cloud terminals, you also need to prepare the input device, the basic device just like the keyboard with USB and the mouse. (If it is the round port of PS/2, you need a USB to PS/2 device). You also can prepare the stereo system if need.

There is earphone and microphone interface in the Net Computing cloud terminals. You also can prepare the earphone and the microphone to take the function of Net Computing cloud terminals. (Note: Right now the function of the microphone connect with the server is not available)

If need the printer, please select the printer with the support of Net Computing cloud terminals and USB interface. The printer with the support of Net Computing cloud terminals, you can refer to the related document.

If need the wireless network connect the host machine, you can select the outside USB wireless WIFI module.

If need to use the flash disk, the Net Computing cloud terminals support the mobile hard disk and the flash disk with USB, meanwhile it can recognize the partition of FAT32 form.

The above preparation is finished; you can start to enjoy the Net Computing cloud terminals.

### 3.2 Installing Net Computing cloud terminals

#### 3.2.1 Prepare before the installing

1. After prepare all the peripheral equipment, you need to confirm the product component is completed. If it is OK, you can start to install the Net Computing cloud terminals. The steps of installing as bellow:
2. Connect display: put the signal line of the display to the port of Net Computing cloud terminals
3. Connect network: put the normal 10-100M network line to the port of Net Computing cloud terminals
4. Connect mouse and keyboard: put the USB line of mouse and keyboard to the port of Net Computing cloud terminals. Or by the USB to PS/2 transform connect the mouse and the keyboard.
5. Connect earphone and microphone: put the line of mouse and the microphone to the port of Net Computing cloud terminals.
6. Connect power: connect the power of Net Computing cloud terminals, then the power of display, press the power button of Net Computing cloud terminals, the system is started

#### 3.2.2 Express setup for Net Computing cloud terminals

1. Connect the peripheral devices to the terminal of Net Computing cloud terminals
2. Connect Net Computing cloud terminals to the switch or the router with the internet line
3. Connect the power line
4. Open the switch of Net Computing cloud terminals, until the indicator light on
5. Click the "connect server" button at the screen

- Click and modify the name of host machine or the address of the IP, login windows will show on the display.

### 3.3 Operation about the Net Computing cloud terminals

After all the line of display 、 network、 power、 mouse and keyboard connect to the Net Computing cloud terminals, press the power button, the Net Computing cloud terminals will boot, the progress bar will show on the display, As show 3-3-1:



Figure 3-3-1 boot progress bar of the Net Computing cloud terminals

Normally, it will get the IP address automatically (LAN need the router) and go into the terminal mode, after connect the net, Net Computing cloud terminals will search the host machine which open the remote desktop in the LAN automatically .As show 2-3-2



Figure 3-3-2

### 3.4 Mode changing

There are two work modes----terminal mode and Mini PC independent operation mode. After the simple operation, you can change between the two modes quickly.

#### 3.4.1 Terminal mode to Mini PC independent operation mode

Net Computing cloud terminals work at the terminal mode in normal; refer to 2-3-2.

If it is need to work at MINI PC mode, click "**System Setup**".

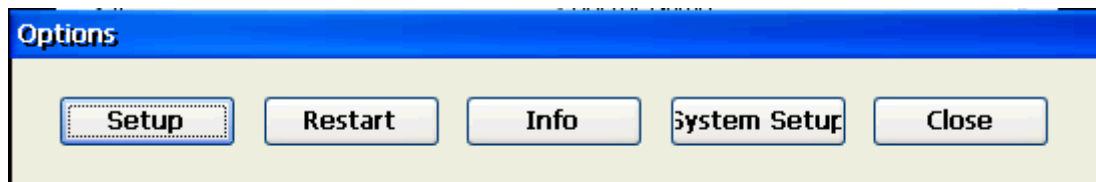


Figure 3-4-1

Click "**system setup**"; go into the face of the system setup.

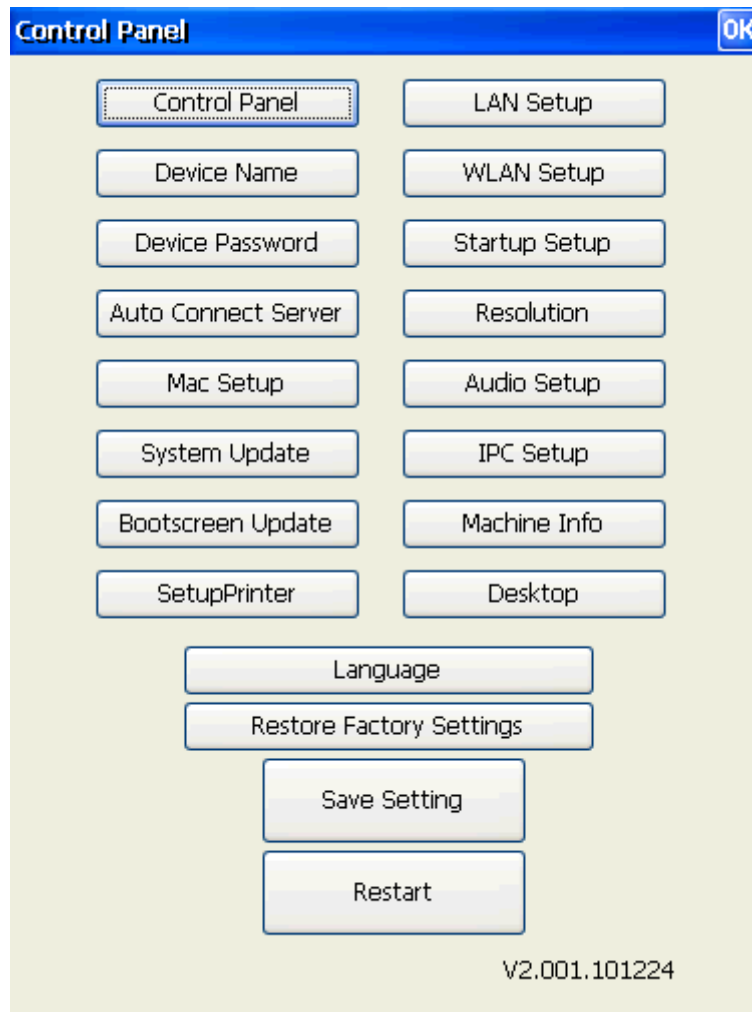


Figure 3-4-2

Click the "startup setup" button, go into the terminal mode.

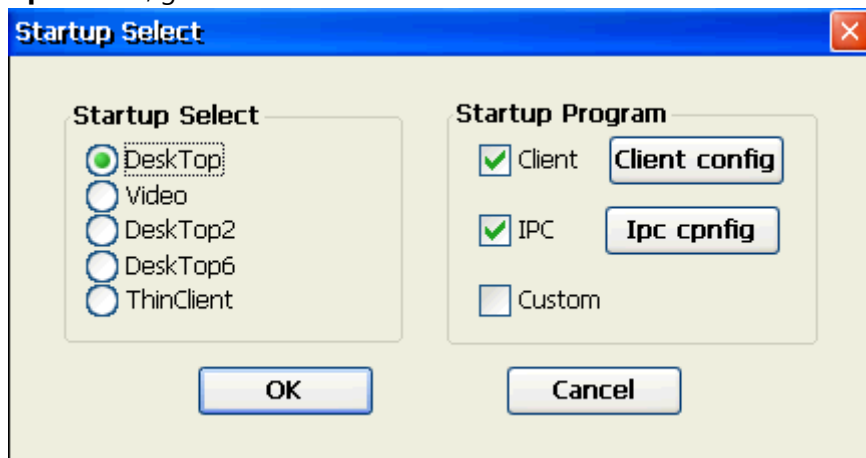


Figure 3-4-3

Select the "desktop" option, and then click "OK" save button. Net Computing cloud terminals will remind restart, after restart it will go to MINI PC mode, show as below:

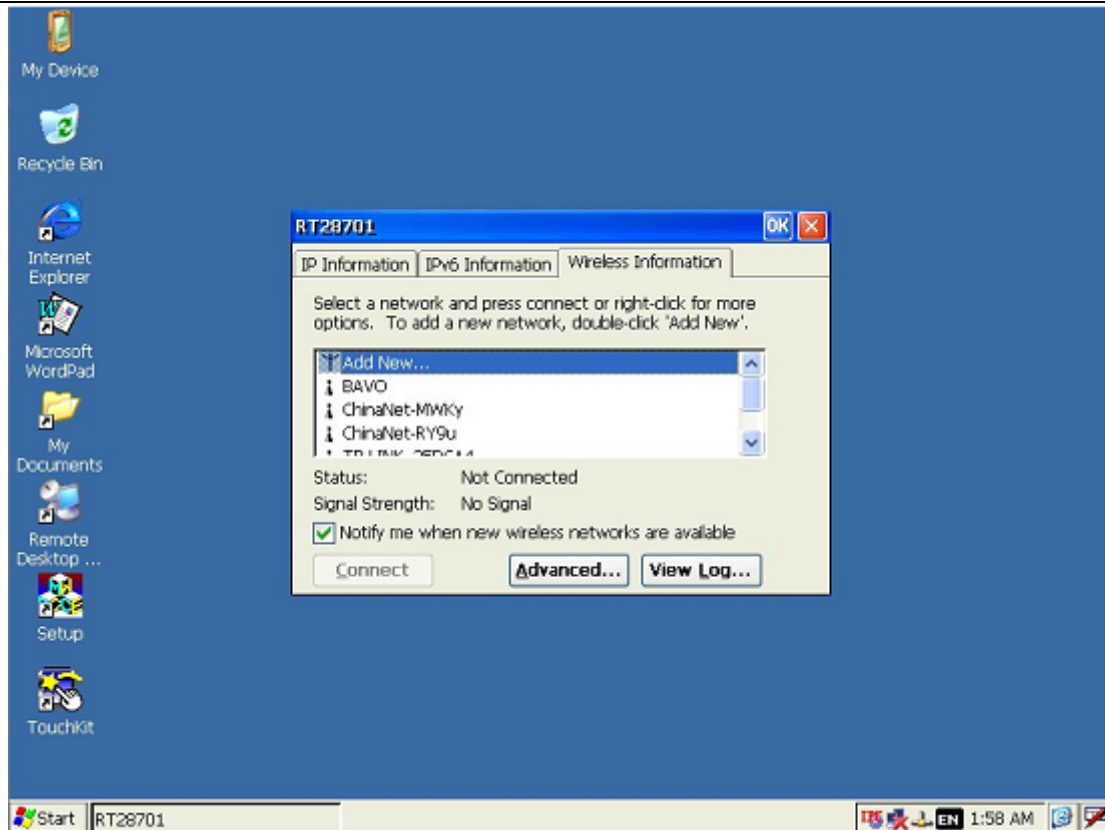


Figure 3-4-4 change to local desktop mode just MINI PC mode

### 3.4.2 Desktop Mini PC independent operation mode to terminal mode

Under the MINI PC mode, click setup enter the system select, click startup select

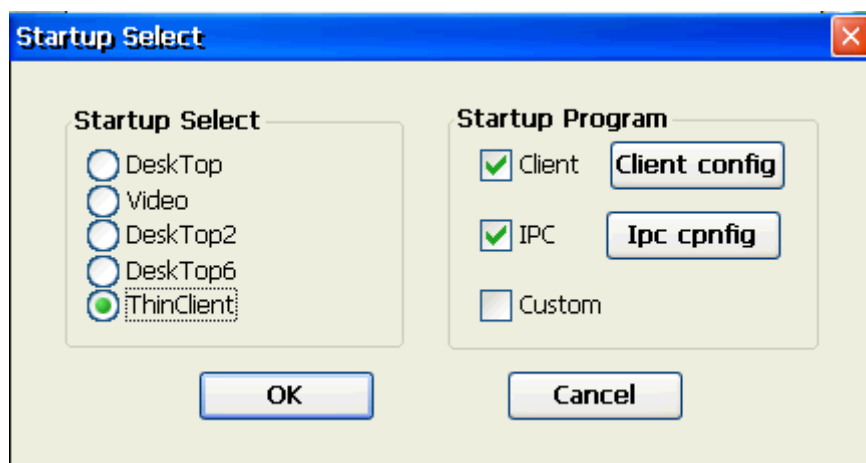


Figure 3-4-5

Select thin client, click OK return to the system select, click OK, restart Net Computing cloud terminals, then enter the thin client mode

## 4. Operating guide in terminal mode

### 4.1 Menus of common terminal mode.

The menus in terminal mode is listed as below figure 4-1-1, consist of "Connect", "Refresh" and "Options" options.



Figure 4-1-1 Terminal mode

### 4.2 Server connection

To view the window of process of connecting server, user can double click the server name in the server list or pitch on the server required, then click the "connect" button as the following figure.



Figure 4-2-1 Connecting window

Processing couple seconds later, user can enter the interface of the server login. To enter further, please input the user name and password like below.



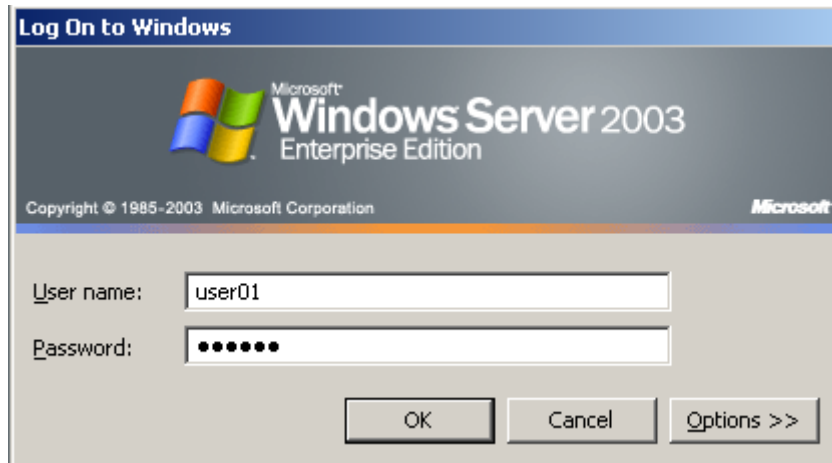


Figure 4-2-2 log on the remote server

After above operation, user can log out or exit by clicking “**windows start**” menu and operate “**log out**”

### 4.3 Options

Click the “**Options**” to view the following window.

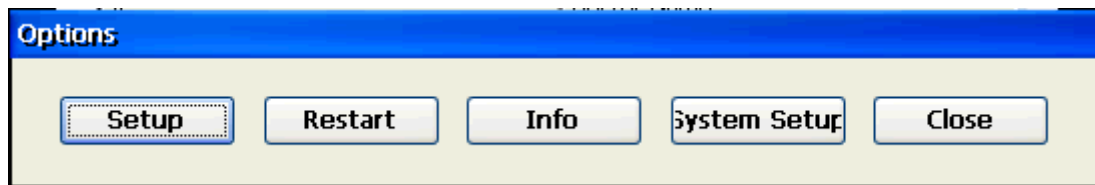


Figure 4-3-1

Configuration: Click “**Setup**” can show the inner IP acquisition manner of item terminal.

Restart: click “**Restart**” to restart terminal.

System information: click “**Info**” is to tell the version of terminal, IP information etc.

System Setup: enter “**System Setup**” to view the detail of “cloud terminal” setup interface.

Close: click “**Close**” to close the current window.

4.3.1 Setup

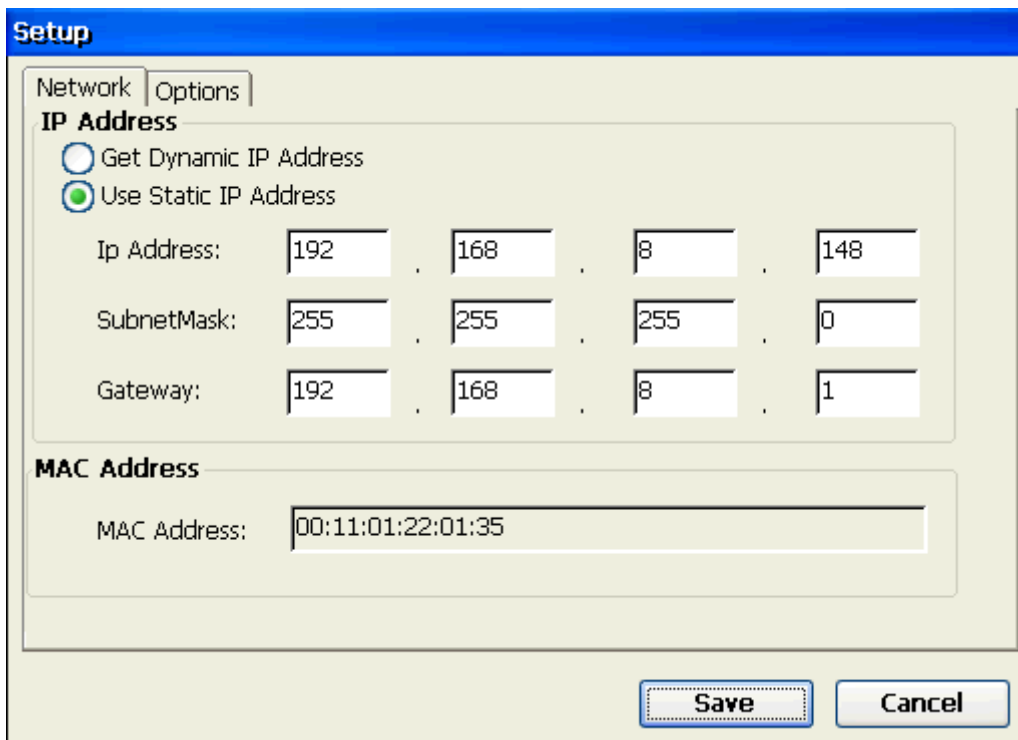


Figure 4-3-2

**IP address**

Get Dynamic IP Address: user can operate this if routers are in the network system.

Use Static Address: it is advisable for users, which can be set up the IP address as normal computer.

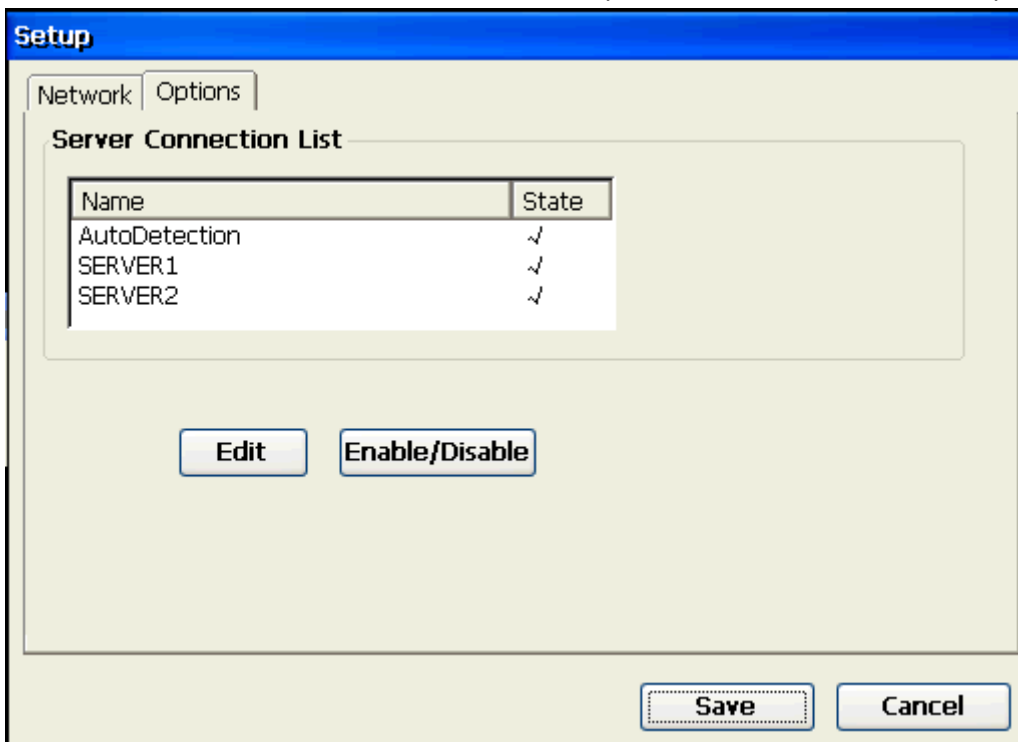


Figure 4-3-3

Selection in Server Connection list.

AutoDetection: auto-search for the server connecting configuration

SERVER1 & SERVER2: they are for server connecting configuration of hardware connection.

Pitch on the required server and click "Edit" to edit connection profile.

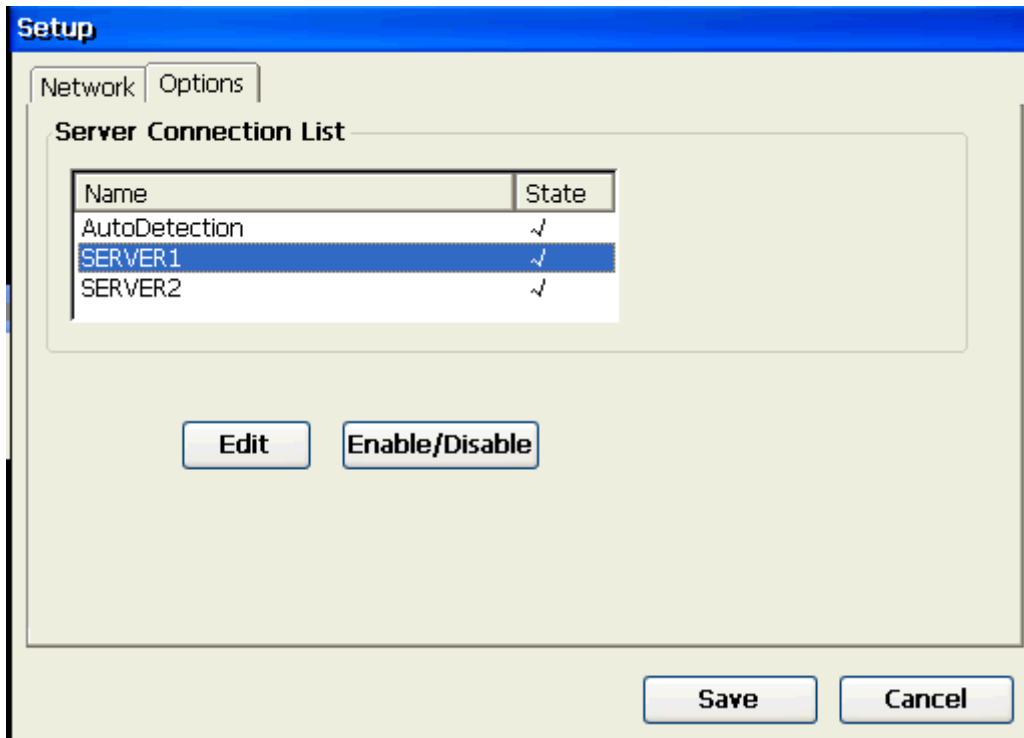


Figure 4-3-4

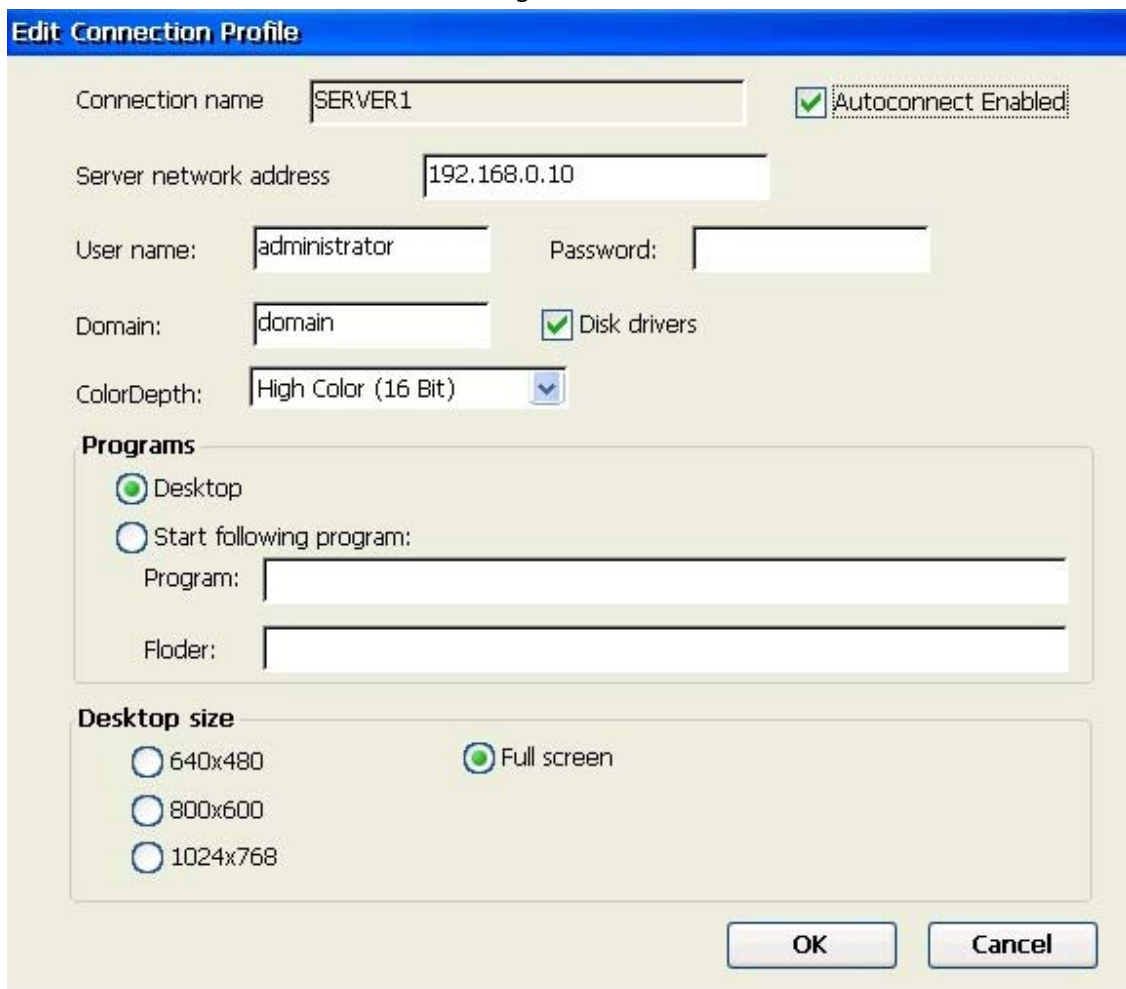


Figure 4-3-5

Server network address: Set up the IP address of required server.

User name and password: set the user name and password for future use.

Domain name: name the domain here if domain added in the server

Disk drivers: it is available to put the cloud terminal disk into the server.

Color Depth: Currently the cloud terminal is compatible with 16 bit and 24 bit only for color depth.

Start following program: Unit will open desktop as defaulted command, user can choose the below item to set other program as auto-start unit after system started.

Desktop size: it is advised to choose "full screen" as defaulted setup.

### 4.3.2 System information

Click "**System Info**" to view the version, name, serial number, IP address, MAC address of the cloud terminal information etc.



Figure 4-3-6

## 5. System options

Click "**system option**", Show interface as blows:

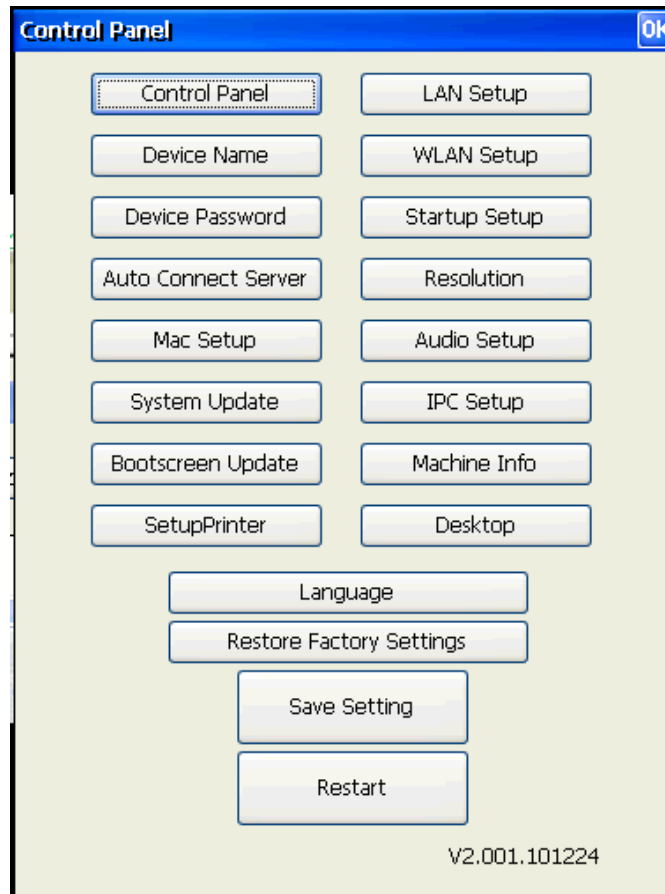


Figure 5-1-1 system setting interface

### 5.1 Setting control panel

Click "Control Panel" button, Interface as blows:



Figure 5-1-2 Control panel

### 5.2 IP Address Settings

Click "LAN Setup", go into IP address settings

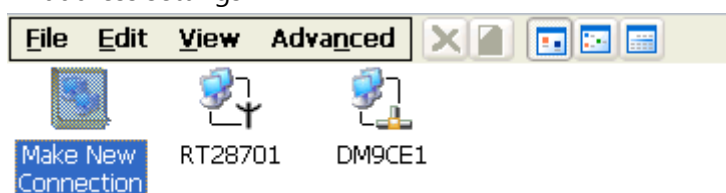


Figure 5-2-1

There are two network cards here

RT28701 for the wireless network card,.

DM9CE1 for an ordinary card.

Set for DM9CE1, for example:

Double-click DM9CE1 icon to set, where there are two network configuration methods, one is "automatically obtain IP address", the other is the "manually configure the network".

### Manually configure the network

Click the IP Address Settings button in the dialog box, select "IP Address" tab, and select "Specify an IP address" radio button, The case may be under the LAN IP address, subnet mask, default gateway and DNS server is set up click the bottom "OK" and restart the terminal .

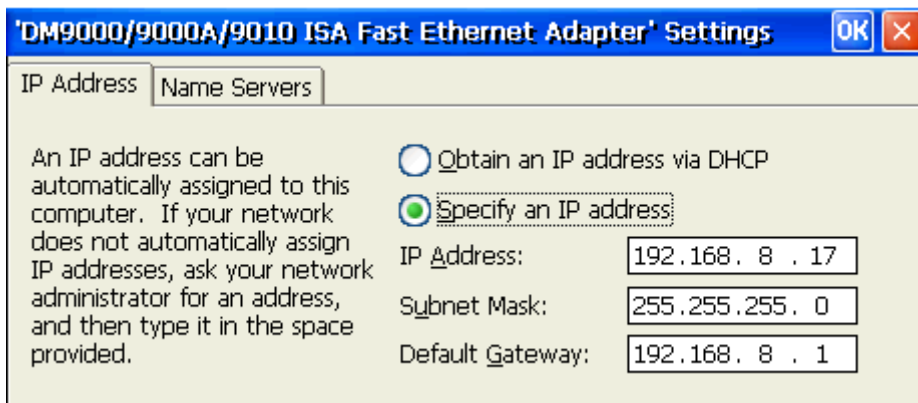


Figure 5-2-2

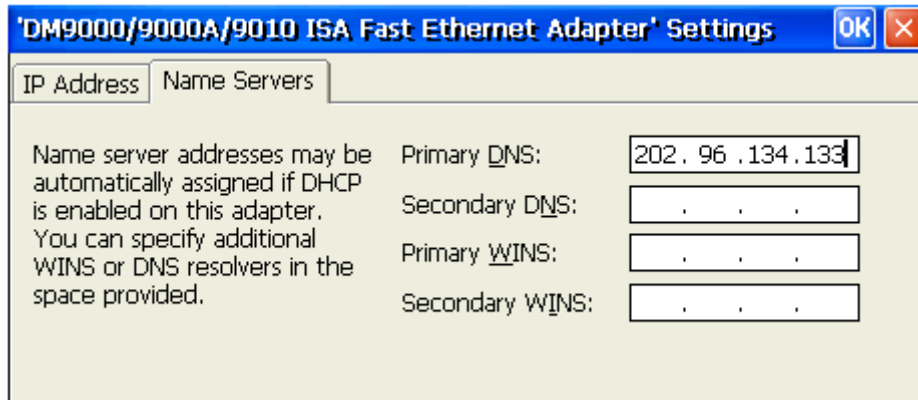


Figure 5-2-3

### Automatically obtain IP address :

Click the Settings button IP address, In the dialog box, select "IP Address" tab, And select "obtain an IP address via DHCP" radio button, Save is set up, and restart the terminal .As blows:

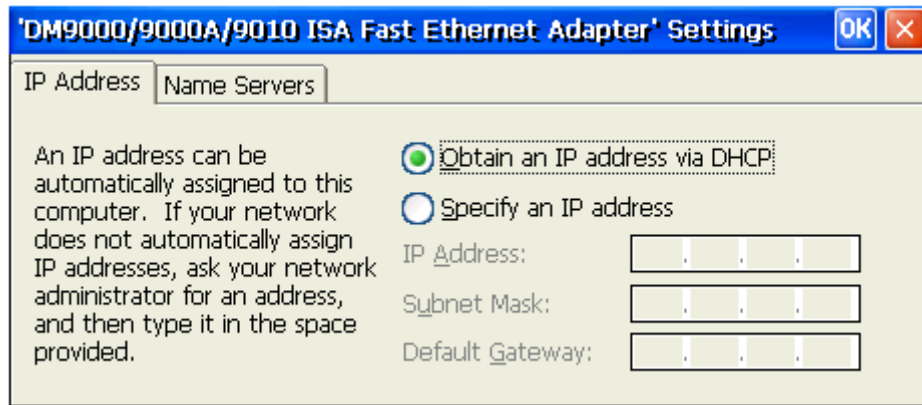


Figure 5-2-4 manually set the IP address

### 5.3 Setting Terminal Name

Click "Device name", go into device name settings

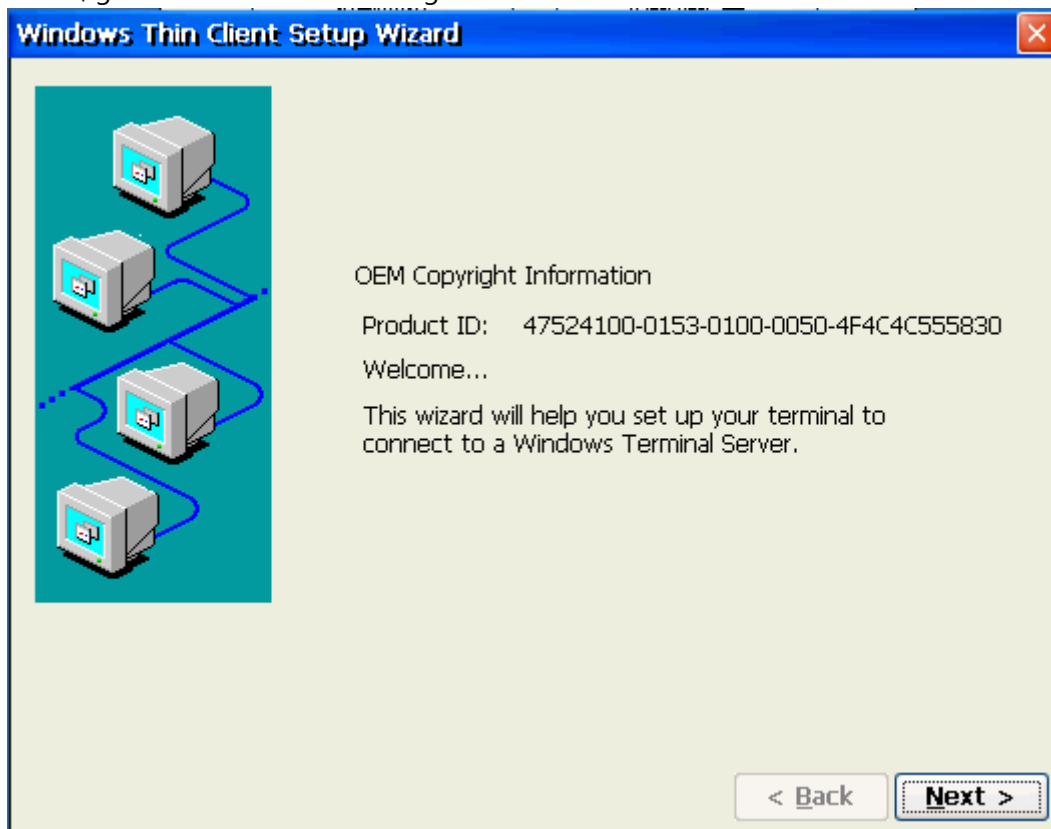


Figure 5-3-1

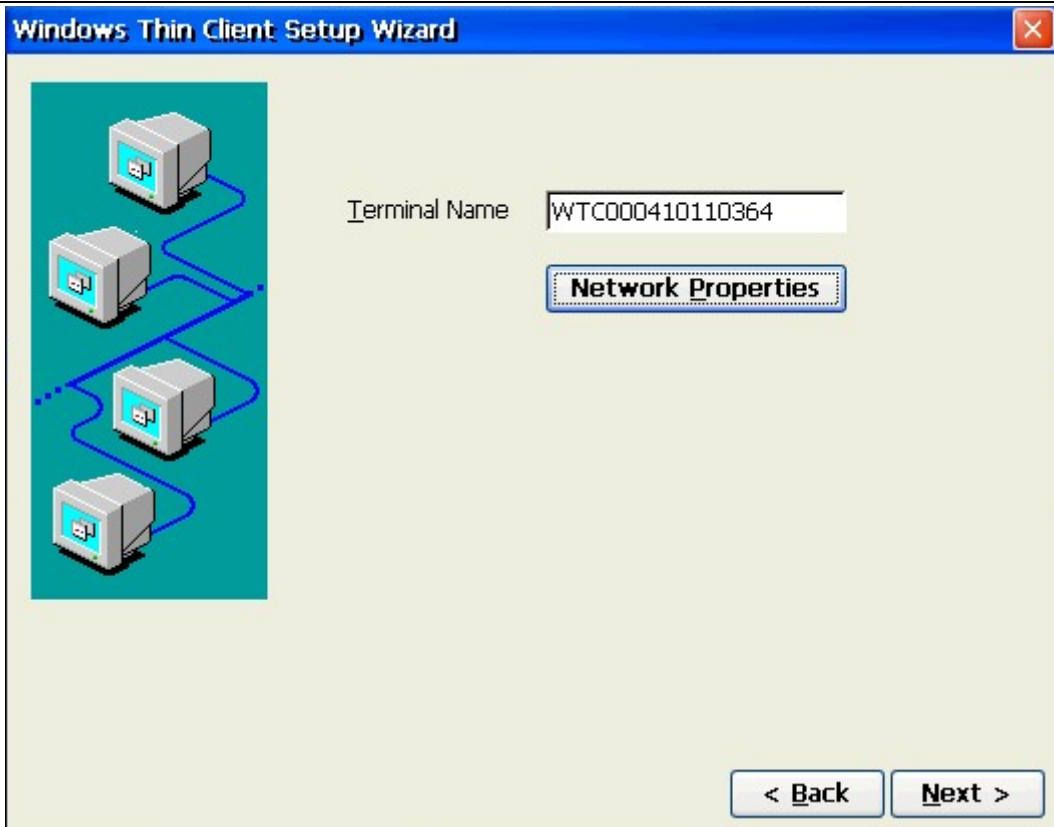


Figure 5-3-2

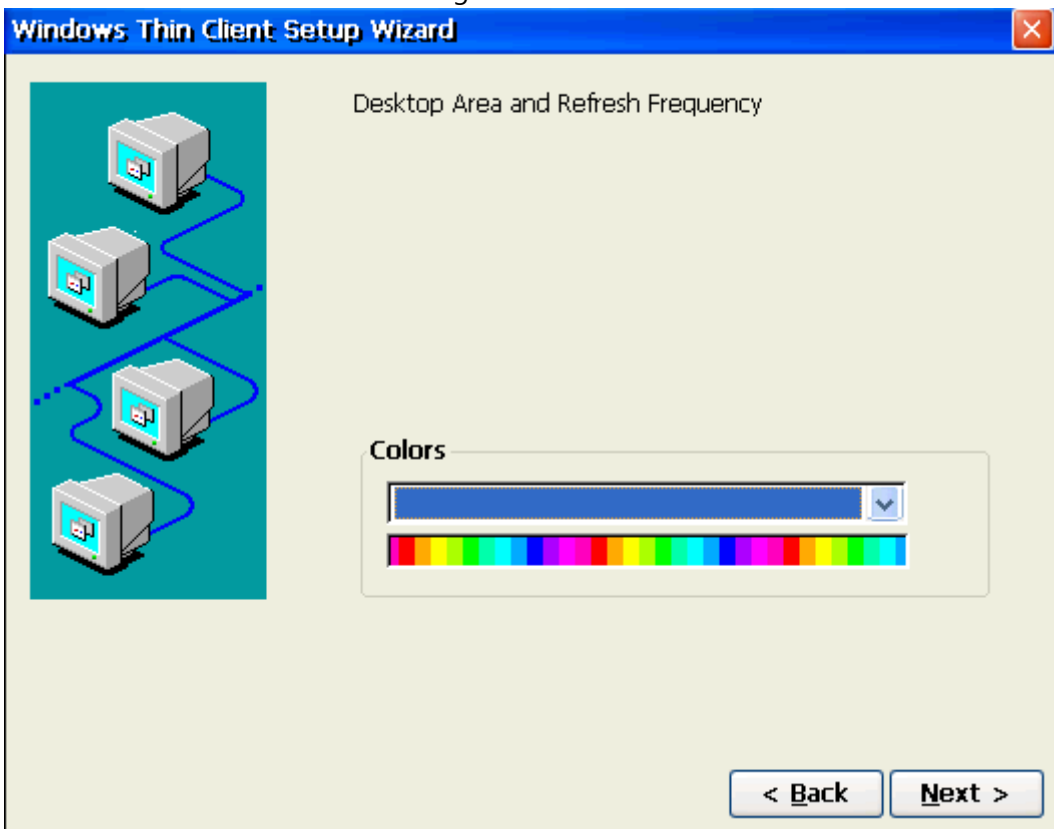


Figure 5-3-3





Figure 5-3-4

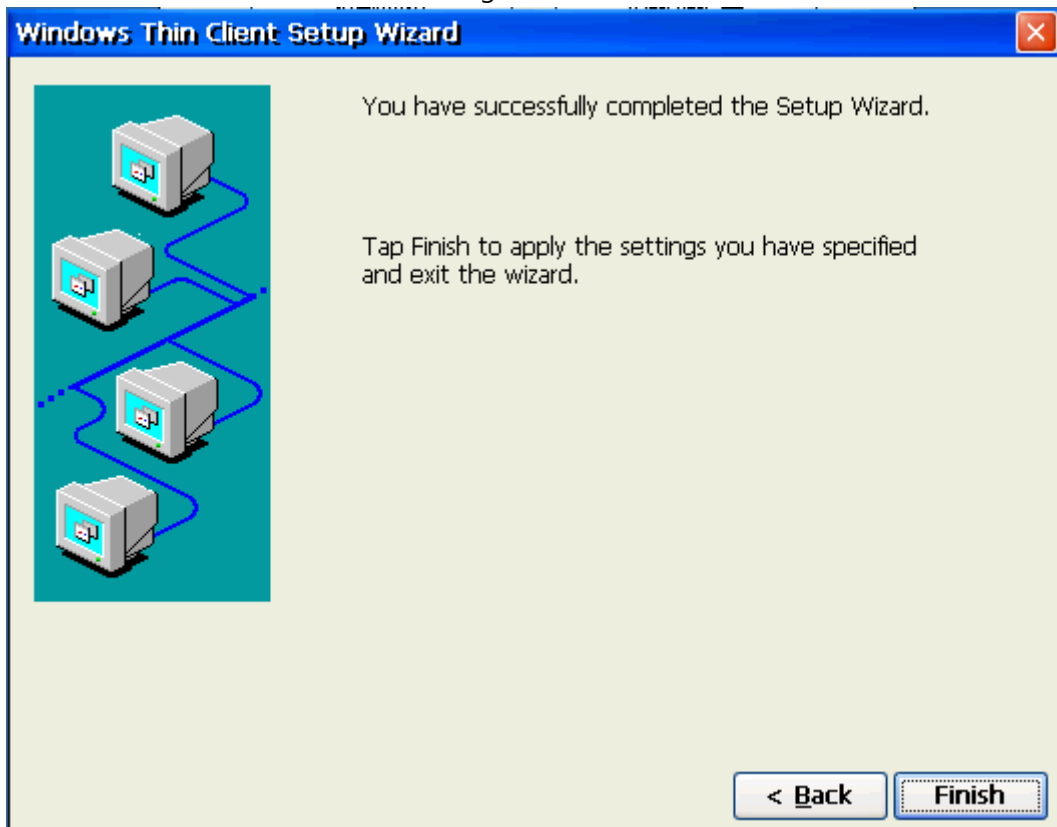


Figure 5-3-5

### 5.4 WIFI settings

Only for series with wireless network

Click "WLAN Setup" button to set wireless network function

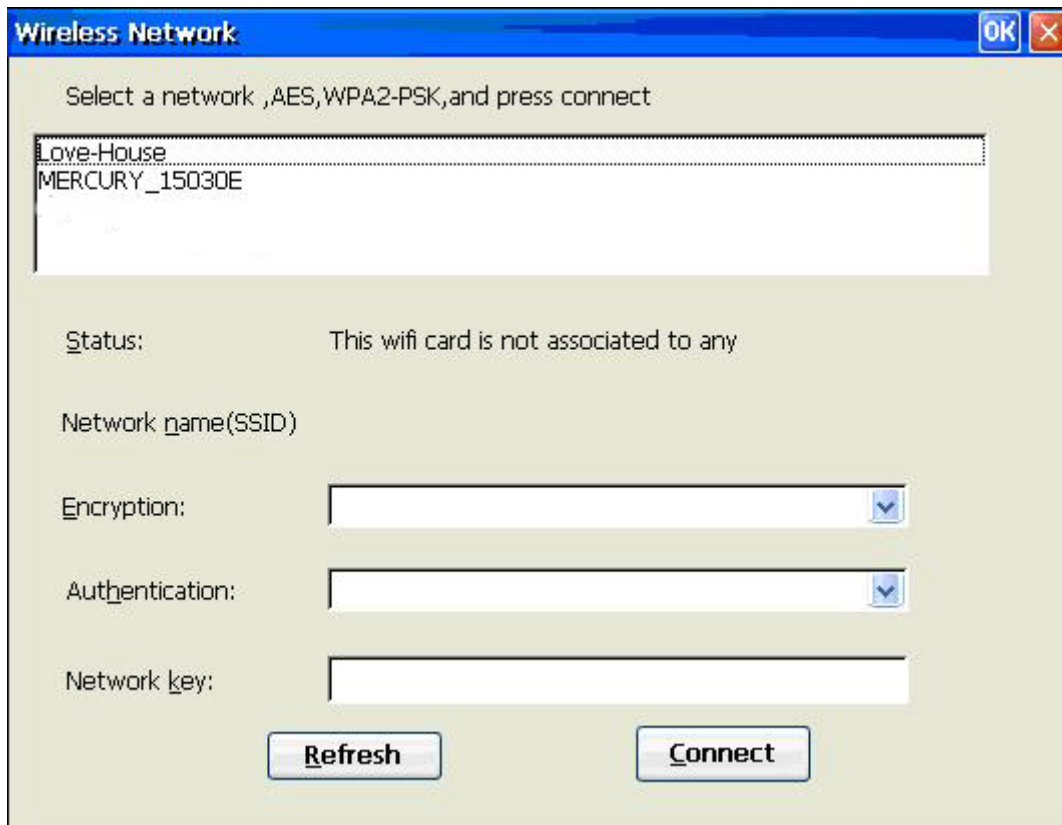


Figure 5-4-1

### 5.5 Change Password

Click "Device Password" button to change Password,

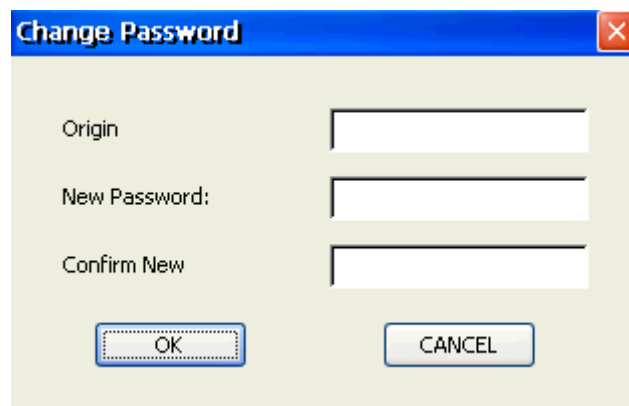


Figure 5-5-1 Change Password

### 5.6 Startup settings

Click "Startup Setup" Button to enter the startup mode setting interface.

This model have 5 starting modes, The default mode for the Thin client, Select the Startup type and click "OK" button, Restart the system . As shown in Figure 5-6-1.

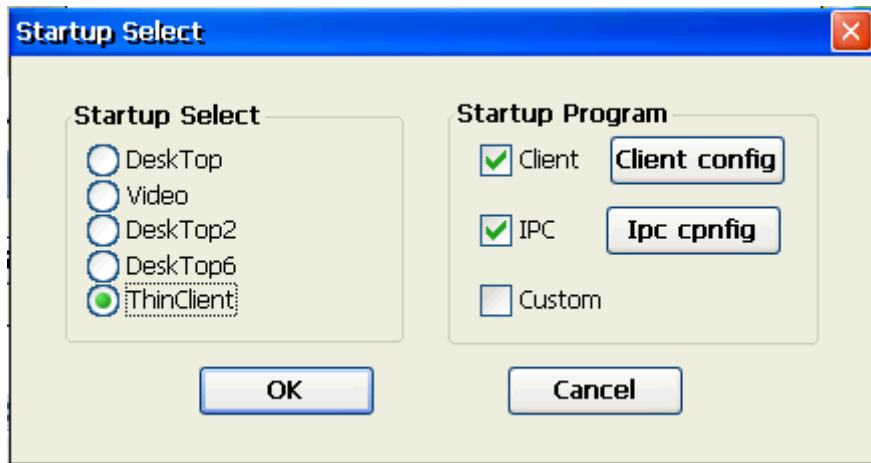
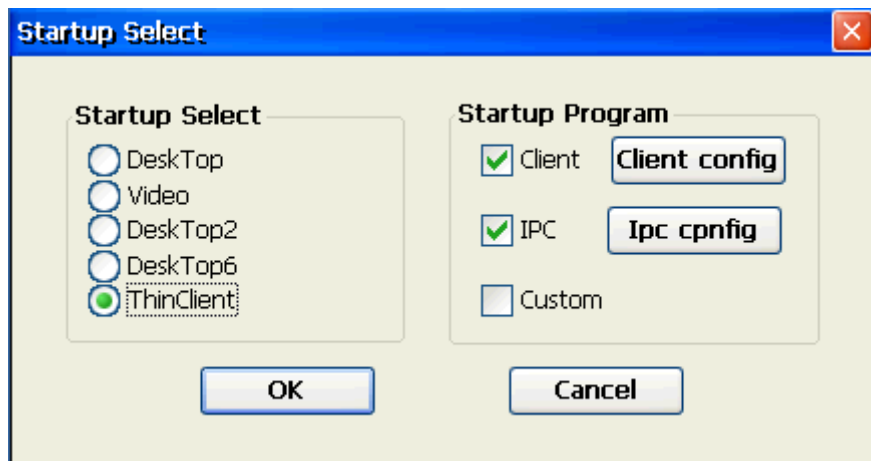


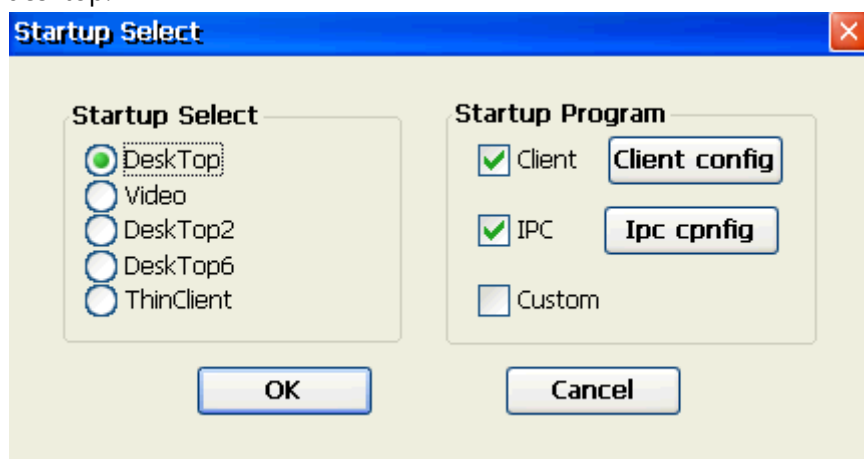
Figure 5-6-1

5.6.1 The terminal mode for thin clients, as mentioned earlier.



5.6.2 Local Desktop

MINI PC model for the desktop.



5.6.3 Video mode

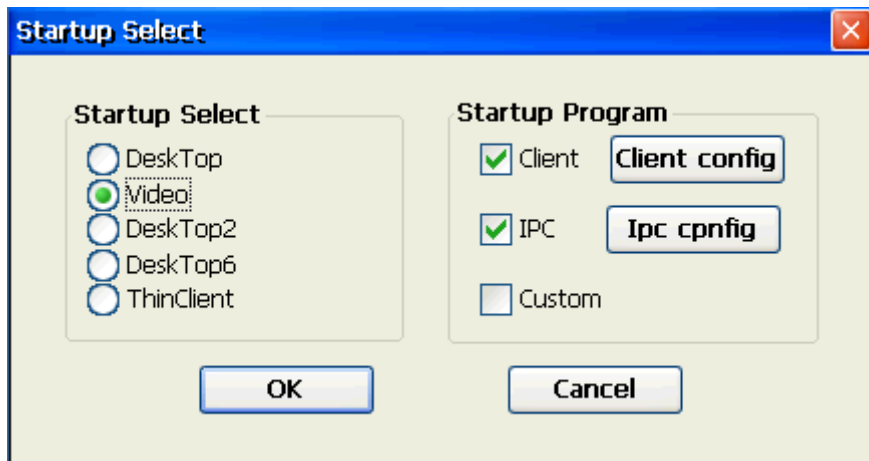


Figure 5-6-2

5.6.4 Two Icons interface

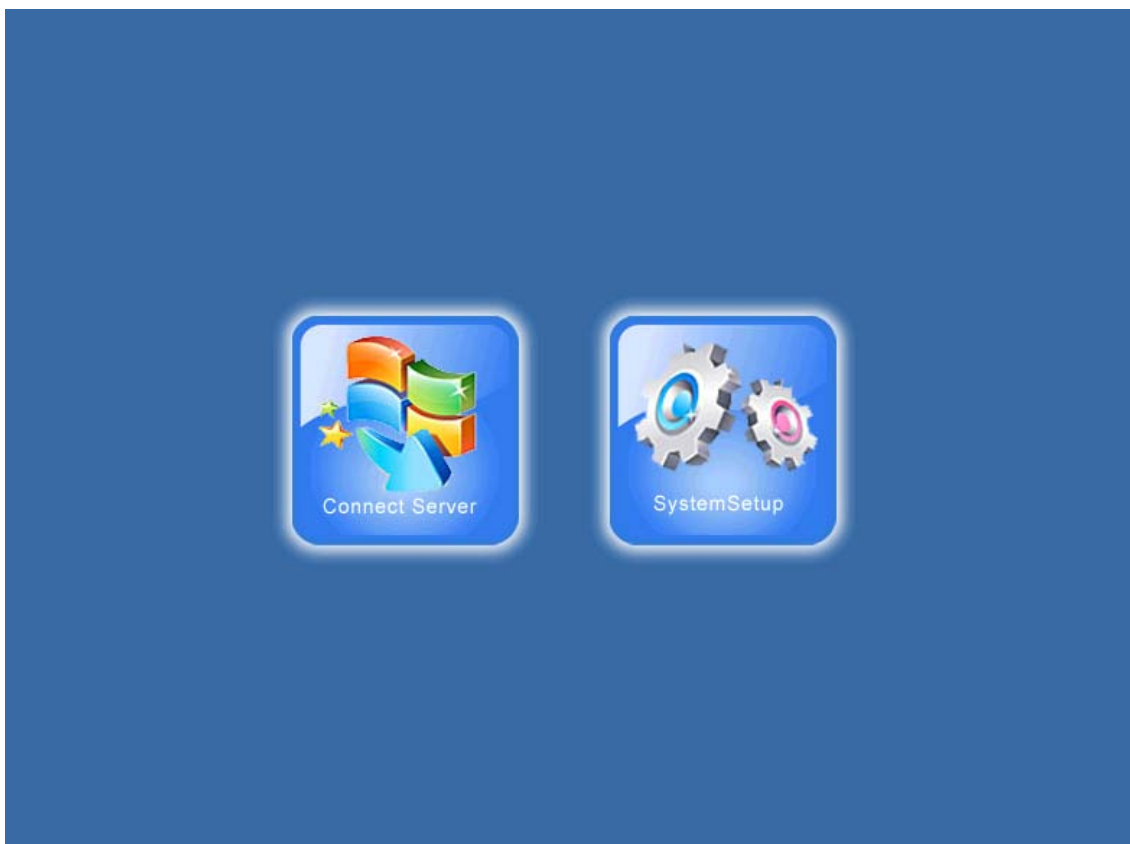
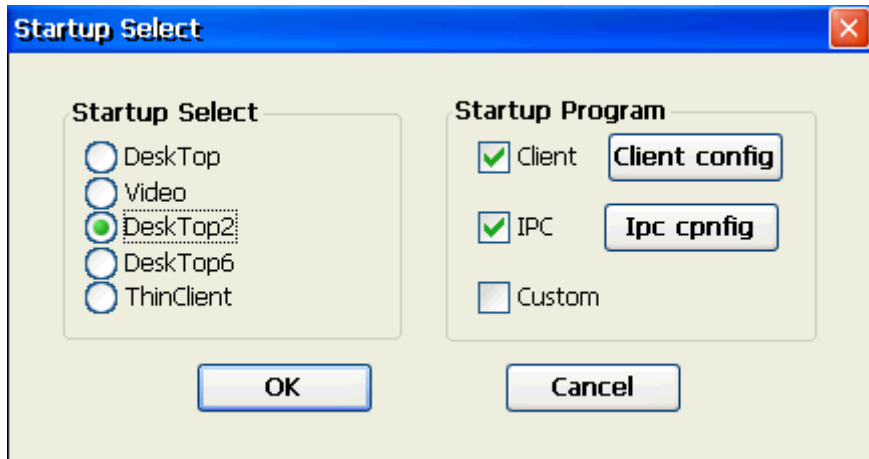


Figure 5-6-3

5.6.5 Six icons interface

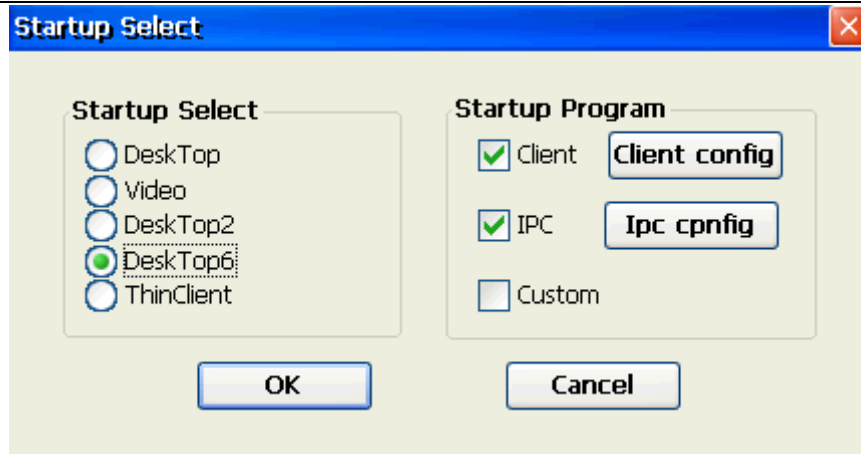


Figure 5-6-4

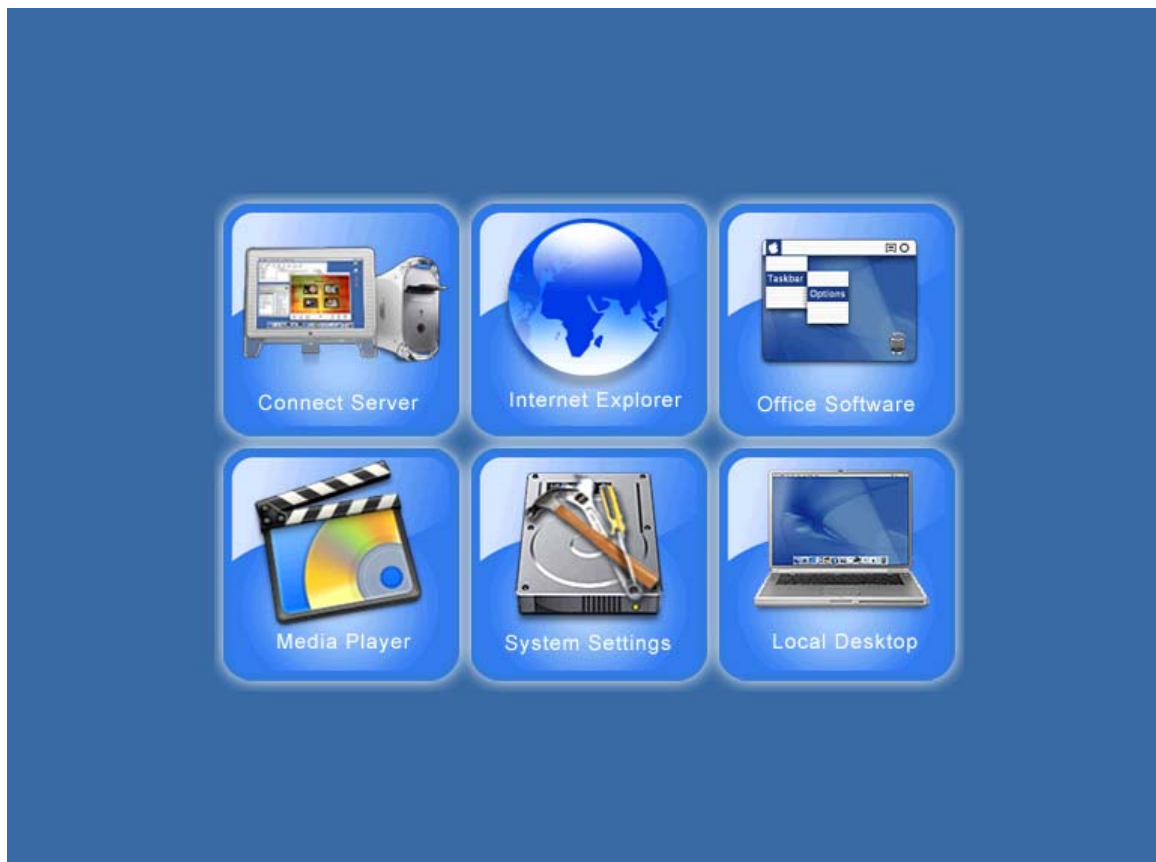


Figure 5-6-5

### 5.7 Connect server automatically restart computer

Click "Auto Connect Server" button; connect the terminal server automatically, as shown in Figure 5-7-1

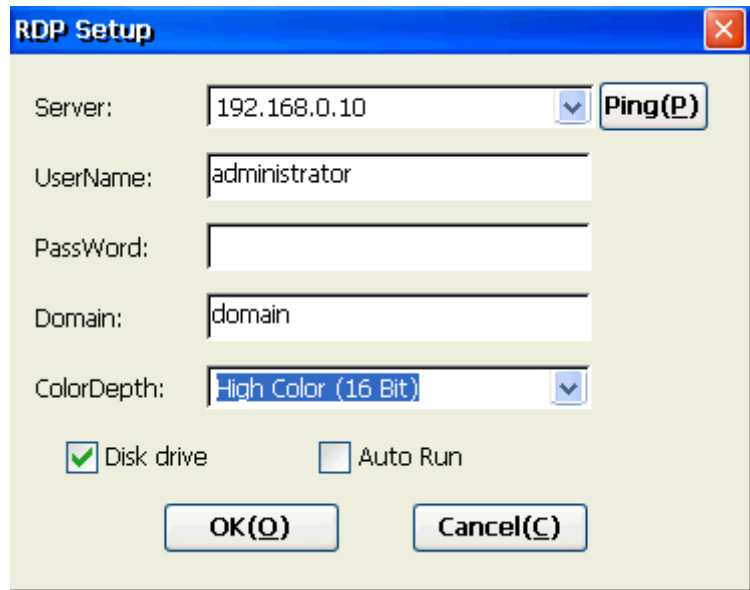


Figure 5-7-1

### 5.8 Display resolution setting

Click **resolution** button to set the resolution of cloud terminal, select **Resolution** button,

In the pop-up dialog box, select the appropriate resolution, and click **OK** to save setting and restart. As shown in Figure 5-8-1.

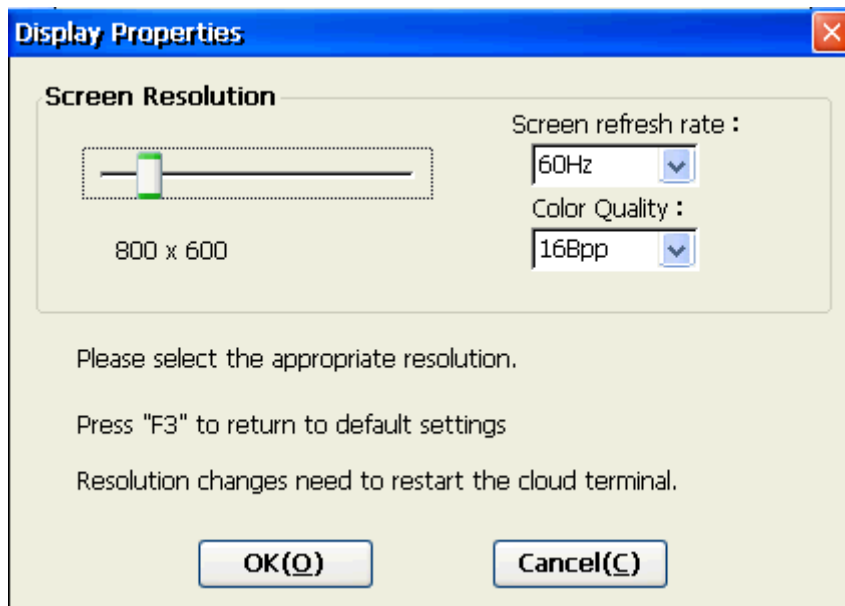


Figure 5-8-1 Screen Resolution

### 5.9 Mac address setting

Click **Mac Setup** button modify the address of MAC, each terminal has a unique factory MAC address, if you need to modify, click **Custom** button in the dialog box enter the new MAC address, then click **OK** and confirm the dialog box changes, restart the terminal. As shown in figure 5-9-1.

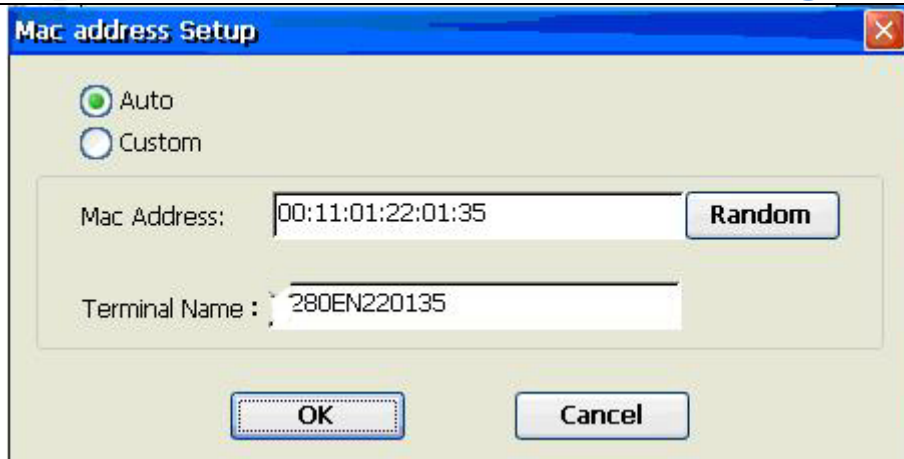


Figure 5-9-1

### 5.10 sound setting

Click "Audio Setup" button , set the sound and volume in the dialog box, click " OK", and click "OK" and restart . As shown in figure 5-10-1.

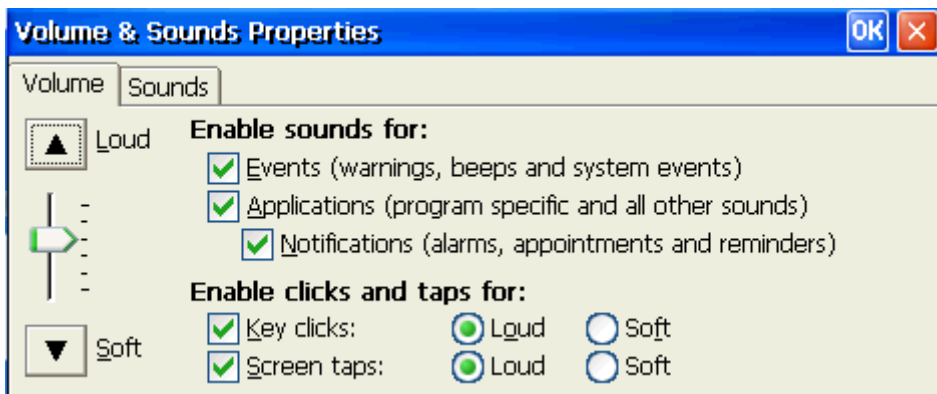


Figure 5-10-1

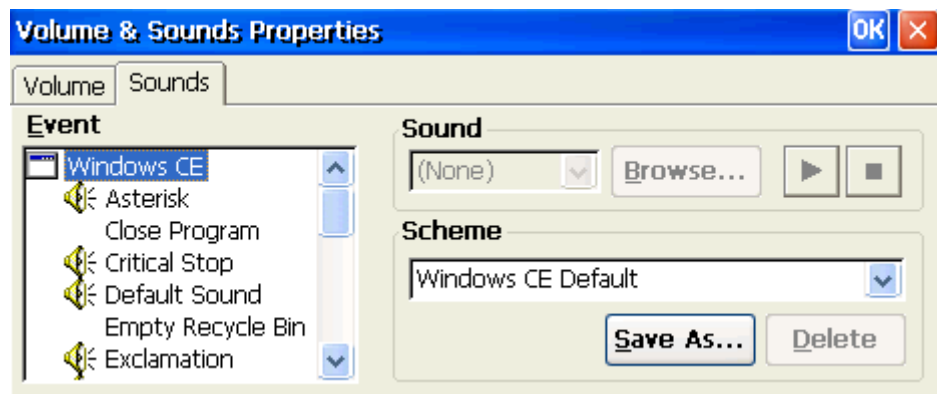


Figure 5-10-2 sounds settings

### 5.11 Update System

Click "System Update" button, Can be updated by the official update software, as shown in figure 5-11-1.



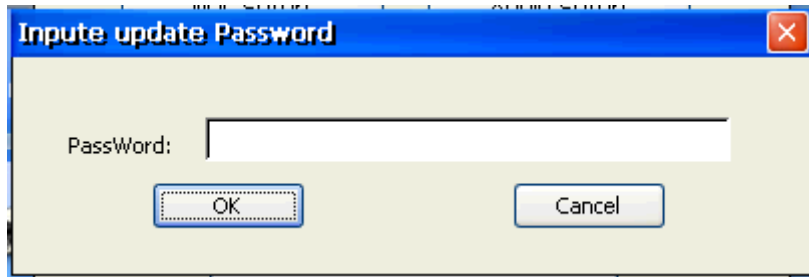


Figure 5-11-1

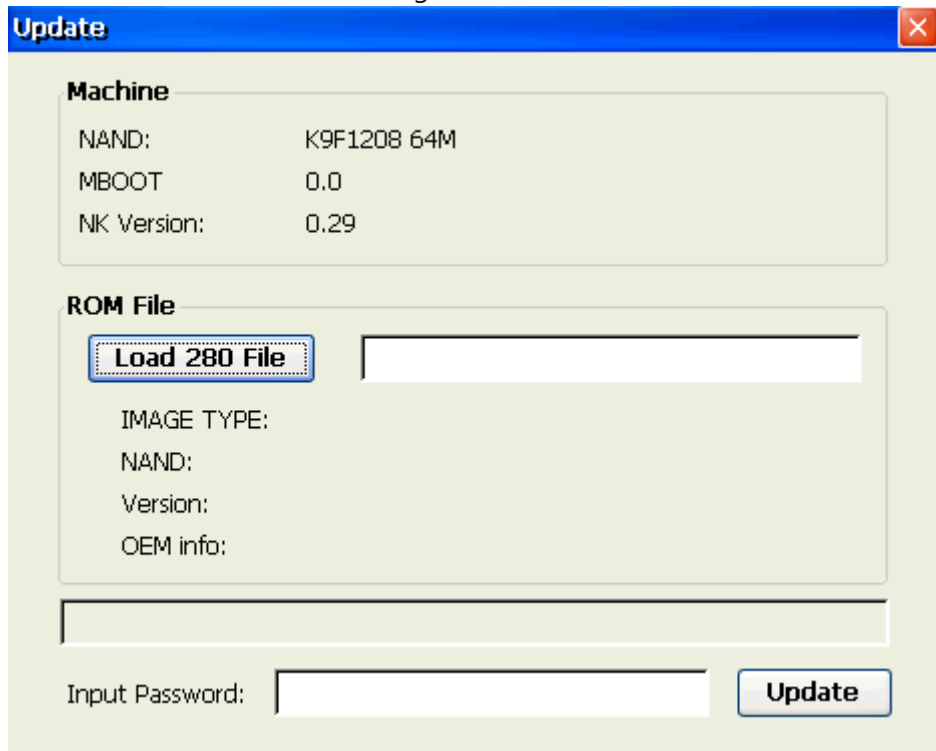


Figure 5-11-2

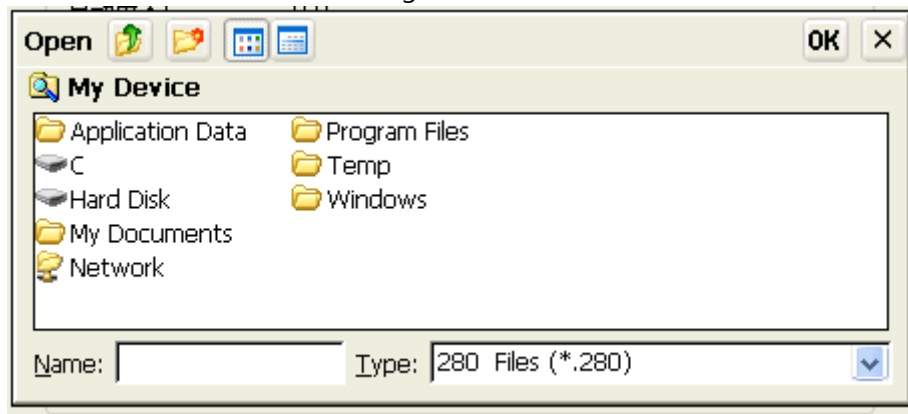


Figure 5-11-3

### 5.12 Monitor screen setting

Click "IPC Setup" button, you can set the terminal, and monitor terminal menu by terminal server.

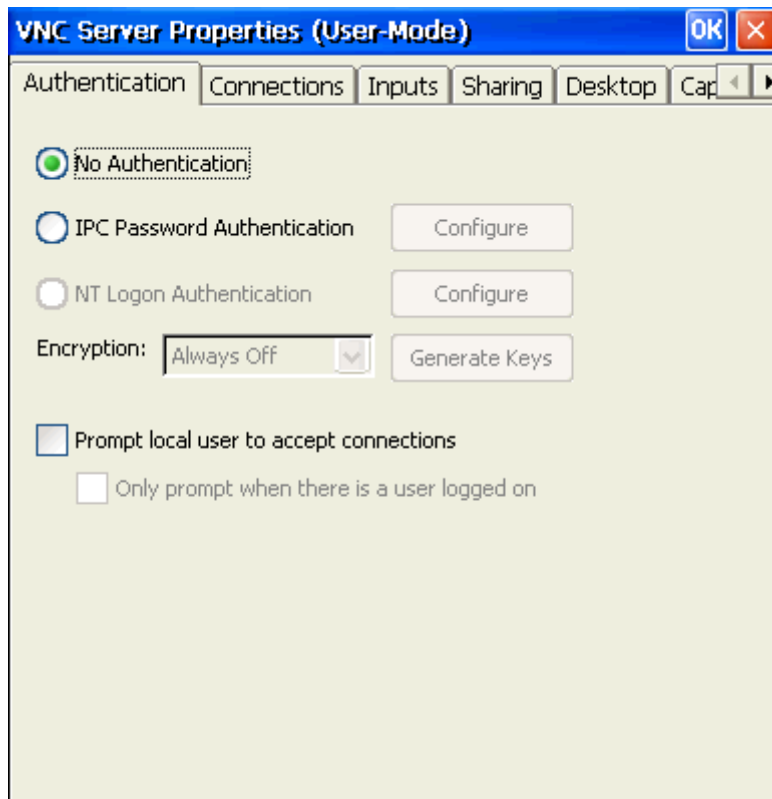


Figure 5-12-1

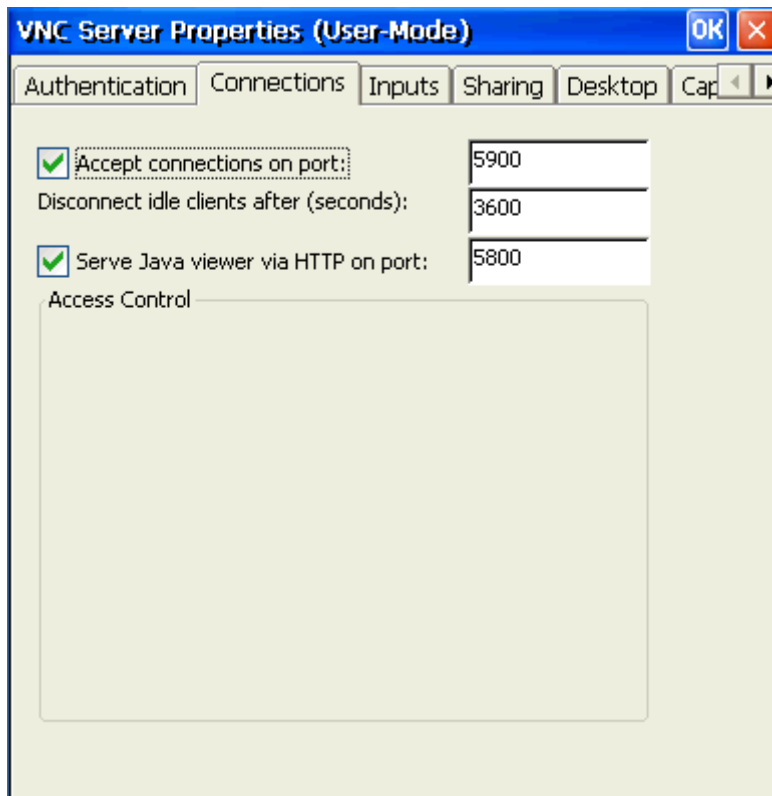


Figure 5-12-2

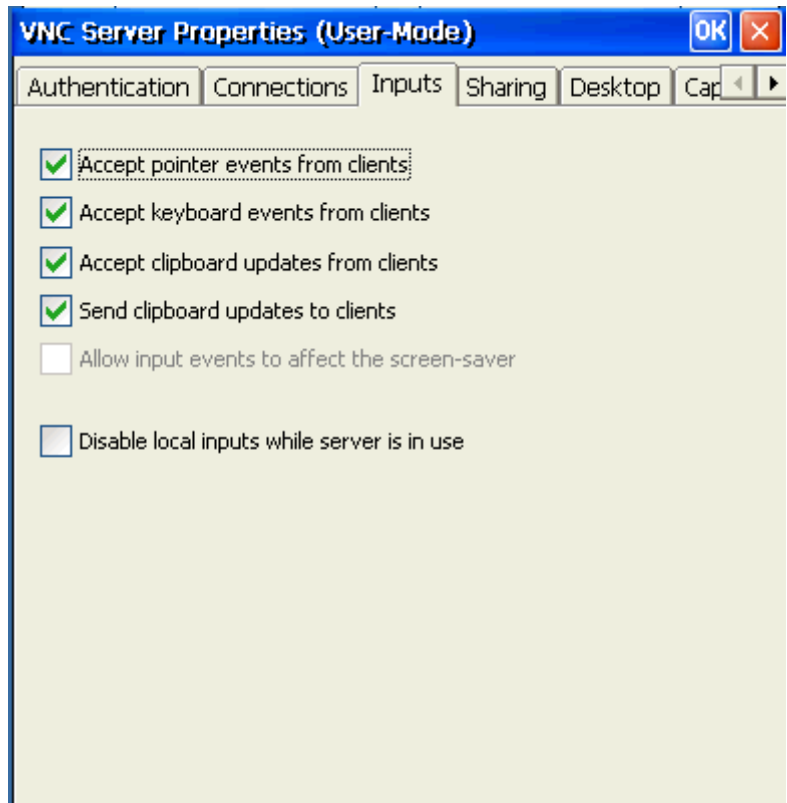


Figure 5-12-3

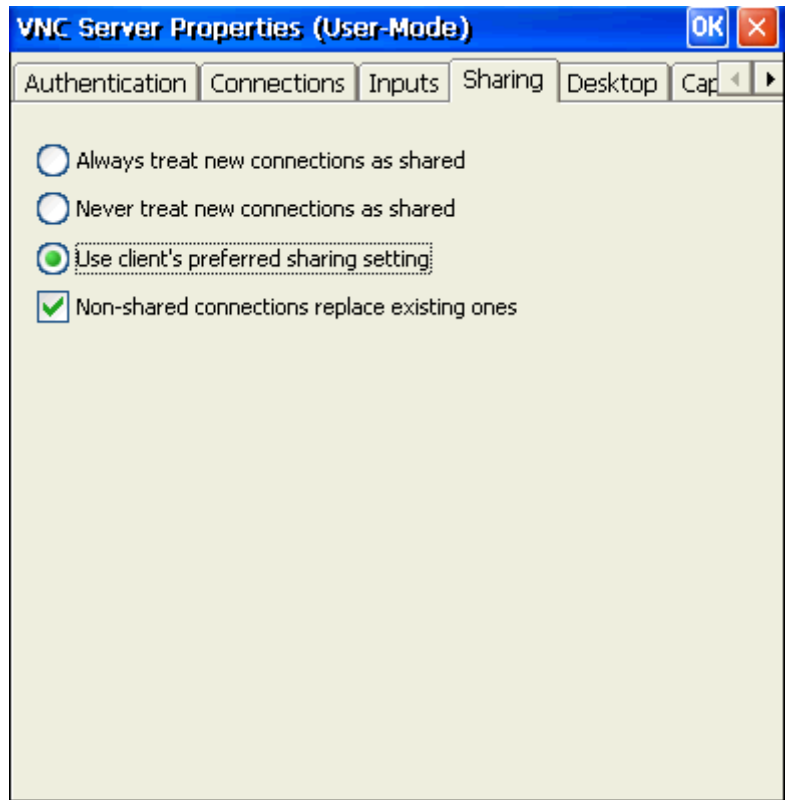


Figure 5-12-4

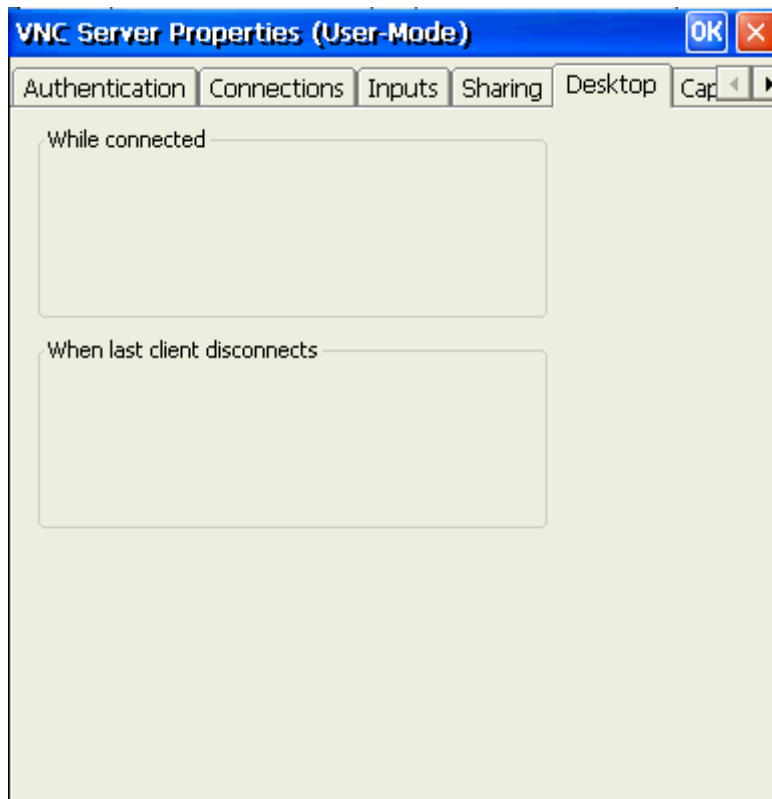


Figure 5-12-5

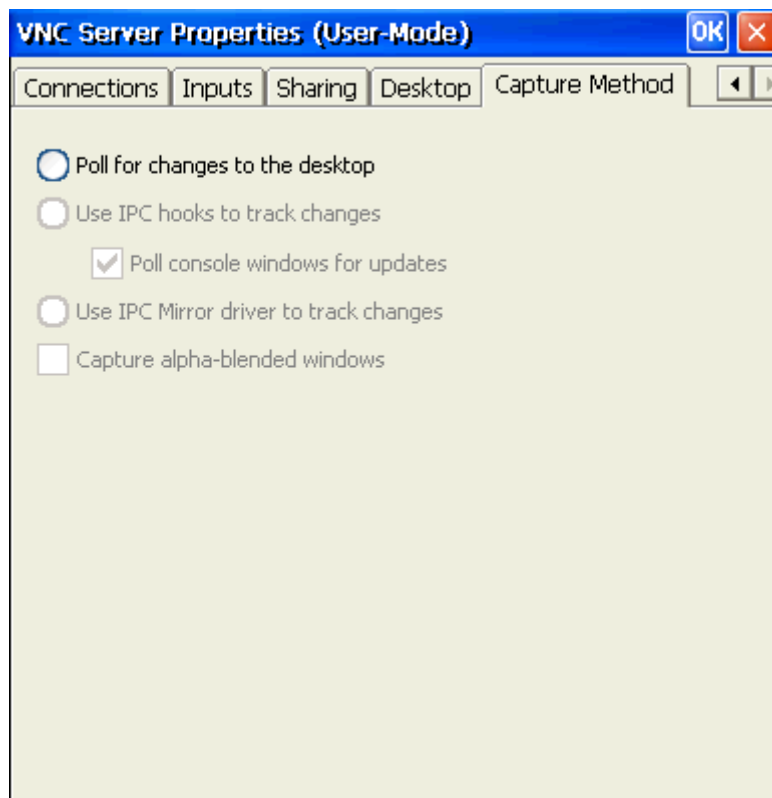


Figure 5-12-6

### 5.13 Change the boot screen

Click "Bootscreen Update" button, you can change the bootscreen, boot screen image is 800\*600 24 bit image

format.

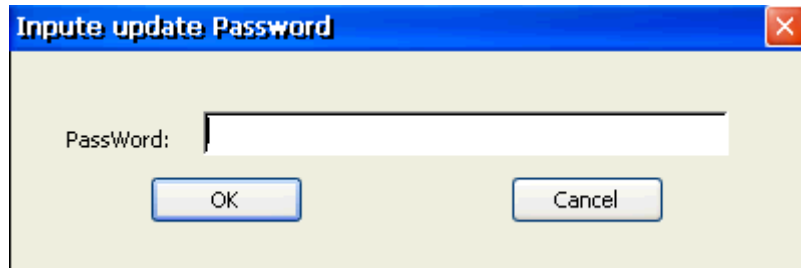


Figure 5-13-1

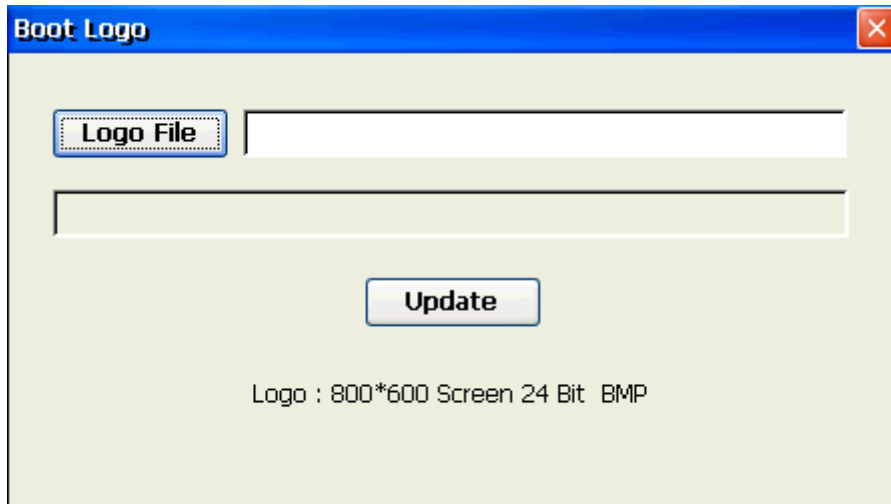


Figure 5-13-2

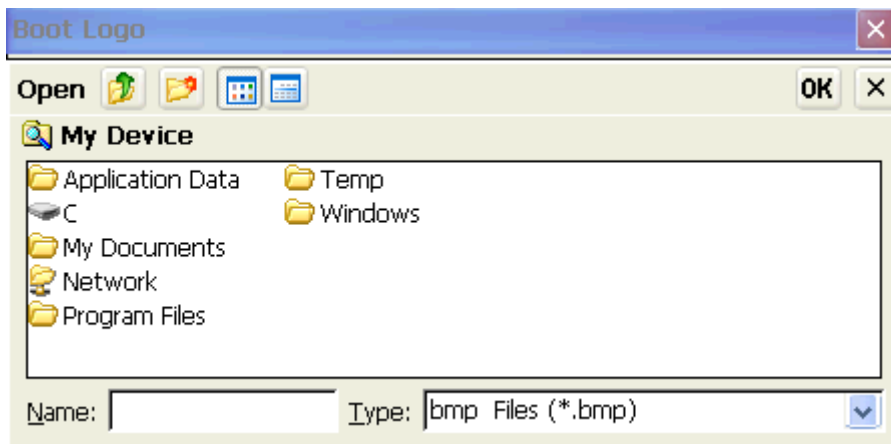


Figure 5-13-3

### 5.14 System information

Click "**Machine Info**", you can view the version of the cloud terminal, name, serial number, IP address, MACaddress.

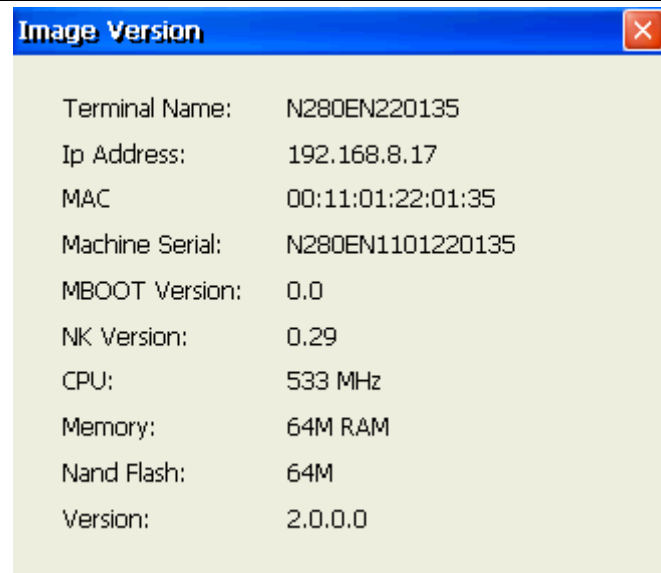


Figure 5-14-1

### 5.15 Setup Printer

Only support some of printers.

Click "SetupPrinter" you can add the local printer or set up the printer.

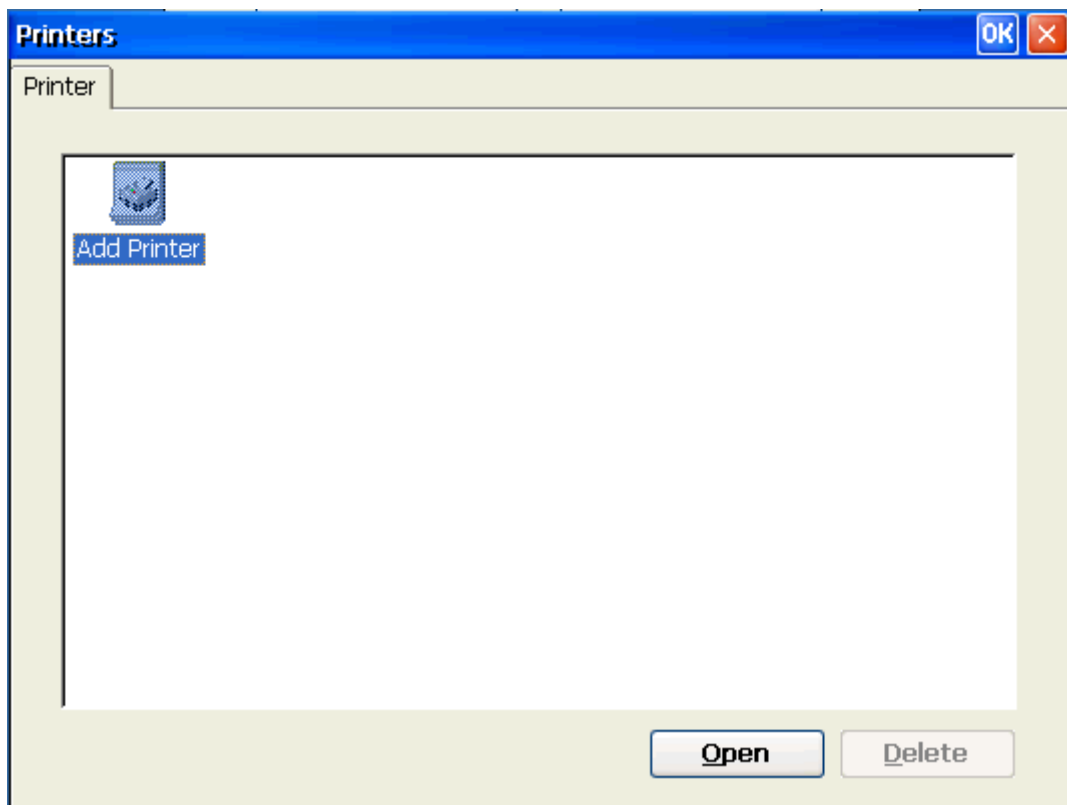


Figure 5-15-1

### 5.16 Go to the desktop

Enter MINI PC desktop mode, as follow:

Click "Desktop" button,you can enter the MINI PC desktop work mode.

### 5.17 Language selection

Click "**Language**" button to set working language of terminals.



Figure 5-17-1

### 5.18 Clear all settings

Click "**Restore Factory Settings**" button to restore factory settings of the cloud terminal.



Figure 5-18-1

### 5.19 Save settings

Click "**Save Setting**" button to save the modification of cloud terminal.

### 5.20 Restart Terminal

Click "**Restart**" button to restart the cloud terminal.

## 6. Operating Guide in Mini PC mode

In the interface of system configuration, click the button of enter into desktop, then the Net Computing cloud terminals will go into Mini PC mode, you can surf the internet, work with lite edition office software, check photos, play video and sounds and download information to U disk or mobile hard disk.

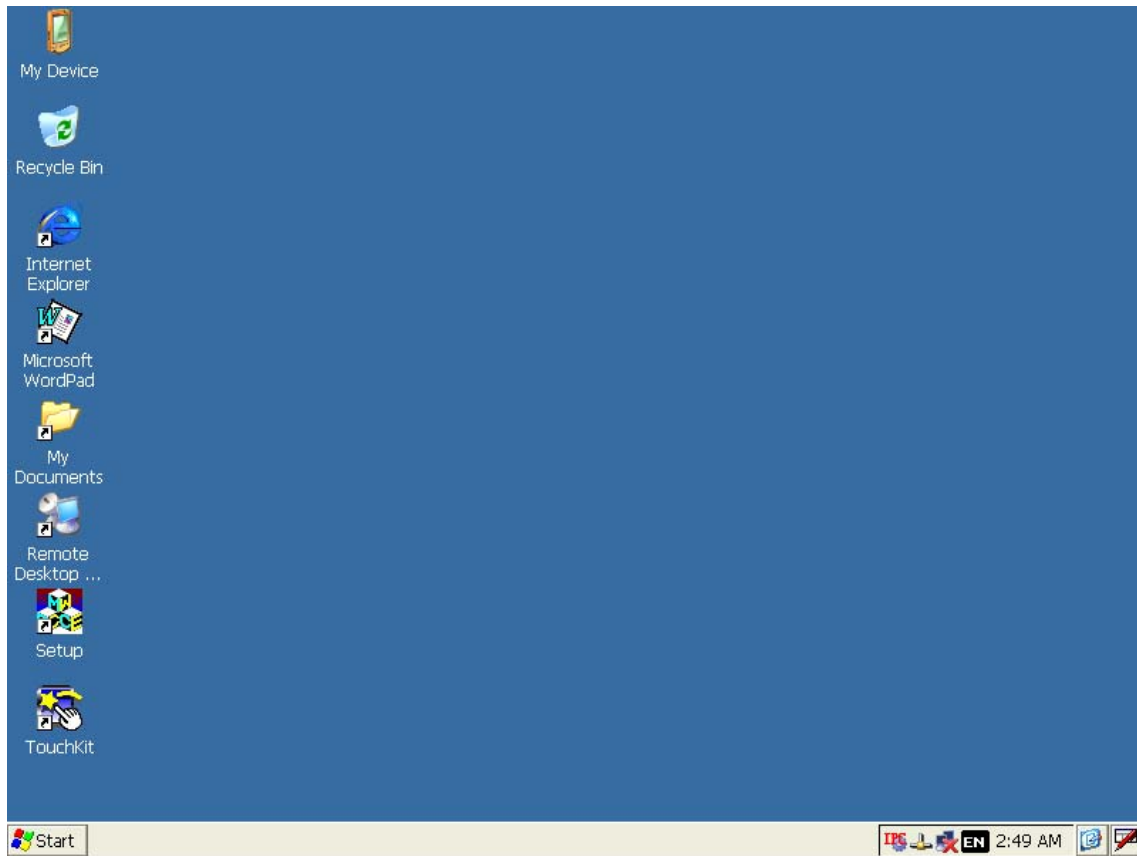


Figure 6-1-1

## 6.1 Remote Desktop Connection

Mini PC support connecting to the remote server, achieve remote desktop. Click "Remote Desktop Connection", which is showed in Figure 6-1-2.



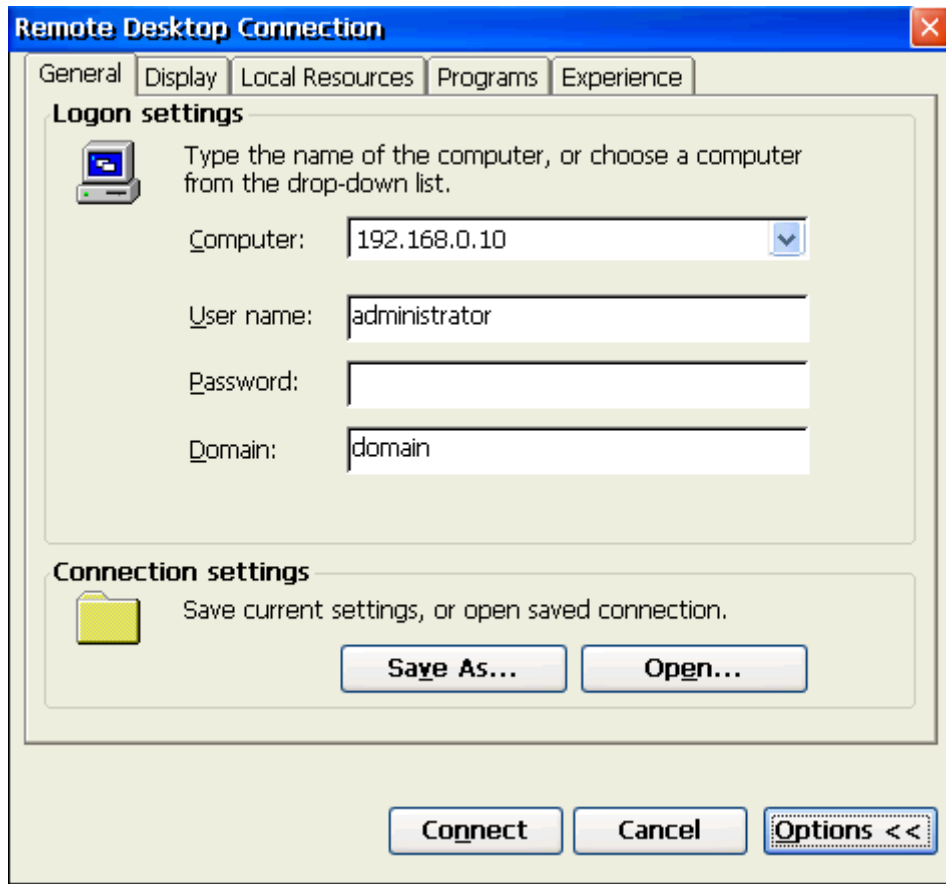


Figure 6-1-2 Remote Desktop Connection

### 6.2 Mobile disk or U disk

Mini PC support mobile disk or U disk read-write operation, just insert the disk then click **“my device”**, it will show to you, please refer to the Figure 6-2-1:

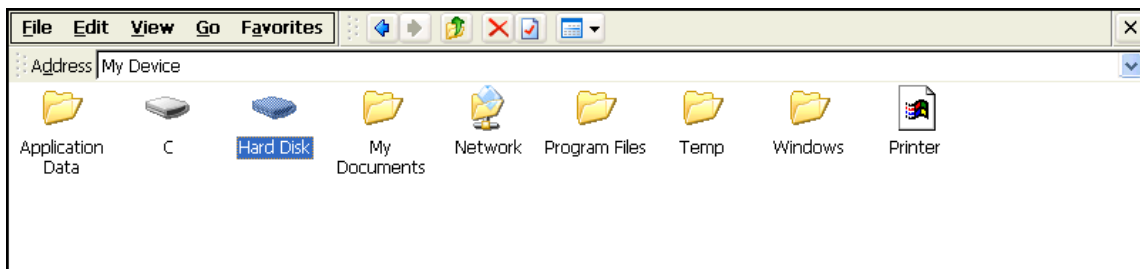


Figure 6-2-1 mobile disk or U disk

### 6.3 display properties

Desktop backgrounds can be set in Mini PC mode. You can select properties in the blank place of screen by clicking right key of the mouse.

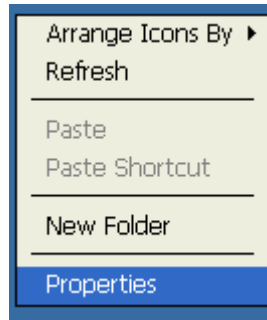


Figure 6-3-1

Open background dialog, click “**browse**” button, and select the picture you like, please refer to the Figure 6-3-2

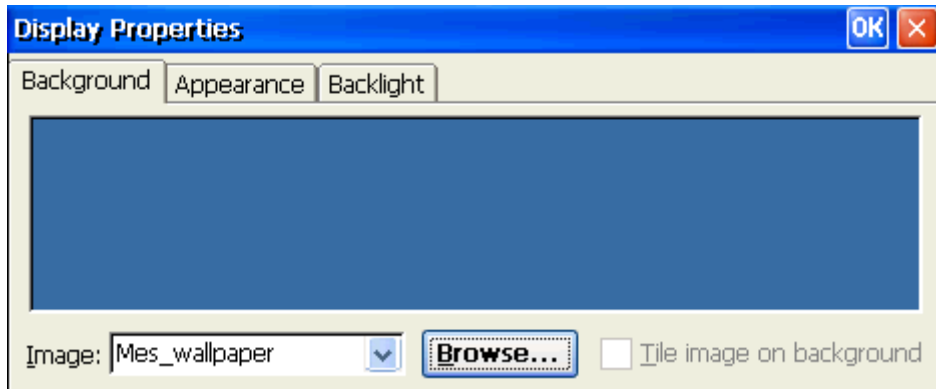


Figure 5-3-2 display properties

### 6.4 screen keyboard

Click the keyboard icon in the bottom right corner of screen, it will pop up a shortcut menu and select “keyboard”, both small keyboard and large keyboard are ok. And you can click the button “hide input panel” in the shortcut menu to hide the keyboard. Please refer to Figure 6-4-1、 6-4-2.



Figure 6-4-1 screen keyboard menu

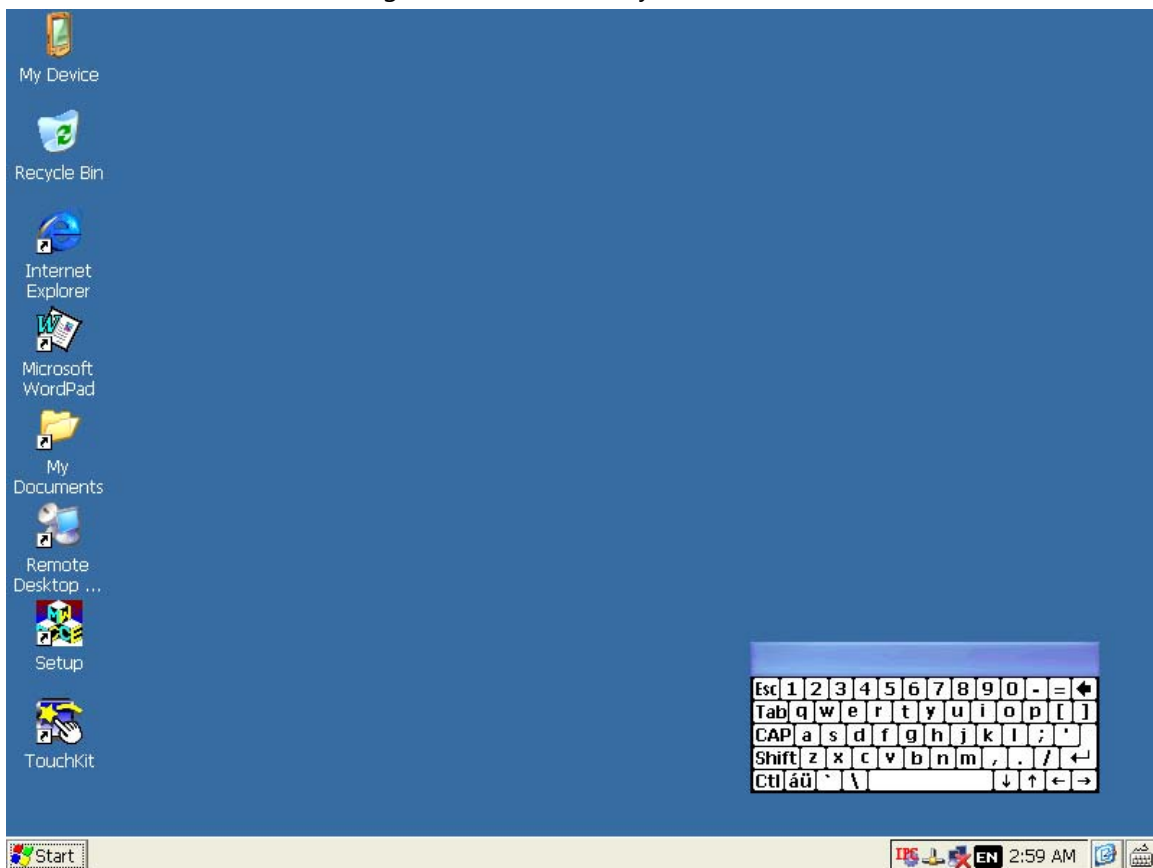


Figure 6-4-2 screen keyboard

Large keyboard mode



Figure 6-4-3

### 6.5 touch kit setting

Support handwriting function, click **“touch kit”** shortcut, open handwriting setting dialog, and please refer to the Figure 6-5-1.

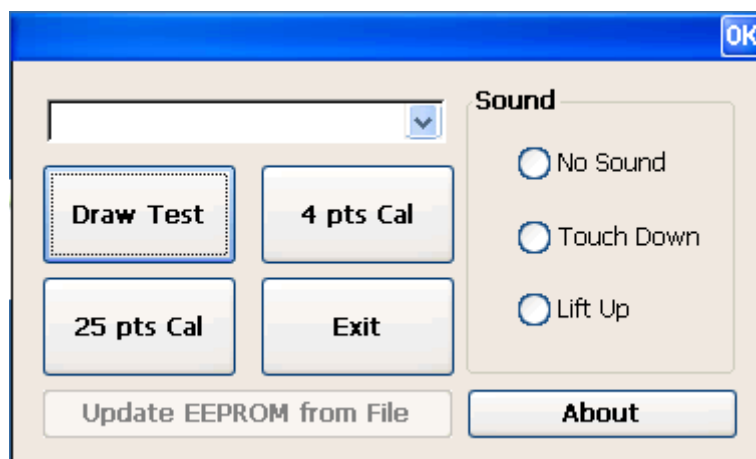


Figure 6-5-1 hand writing setting

### 6.6 Excel Viewer (this function has canceled)

You can view Excel files by Excel viewer function of Mini PC mode.

### 6.7 Image Viewer (this function has canceled)

Support multi-image forms ,such as BMP、 GIF、 JPG、 PNG ,etc. by image viewer function of MINI PC . And you can also support read images from U-disk and HDD.


### 6.8 Internet Explorer

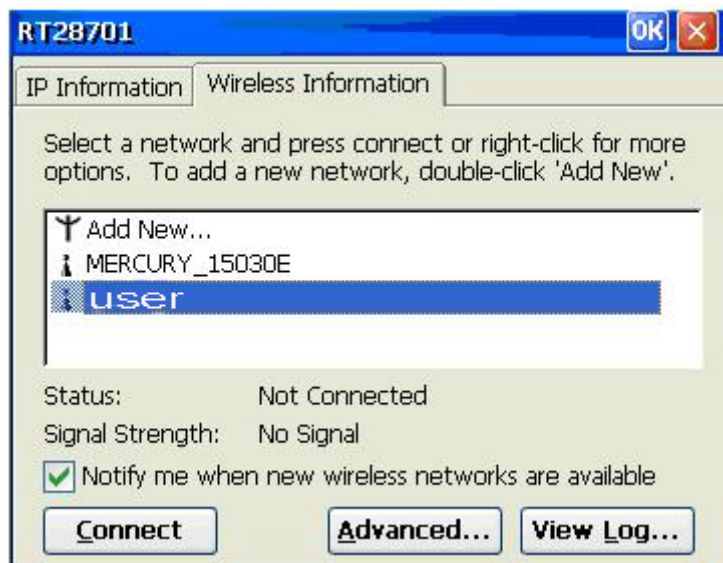
Under Mini PC mode, the internet explorer support usual web browser.

### 6.9 Microsoft WordPad

You can edit the files by WordPad function under mini PC mode. This WordPad software is similar as the editor in PC, can edit most of the files.

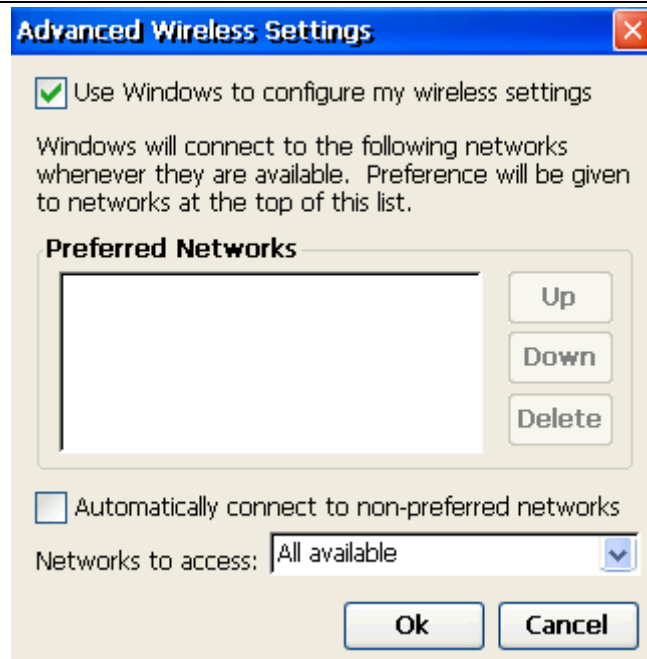
### 6.10 Wireless network setting

Under Desktop mode, it will pop up wireless network setting automatically, or double-click the icon  in the bottom right corner of taskbar, see below Figure:



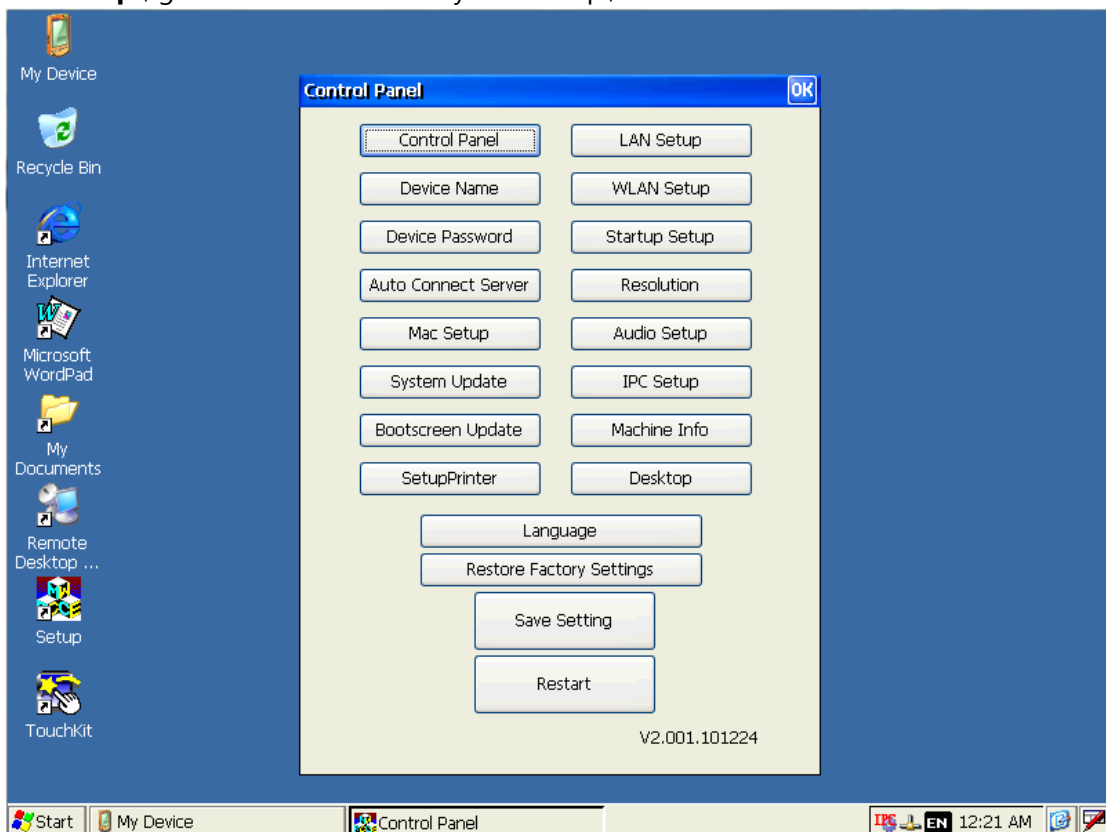
Double-click corresponding wireless network, you can set up the parameter of wireless network function.

Click advanced button, you can set up the wireless network mode.

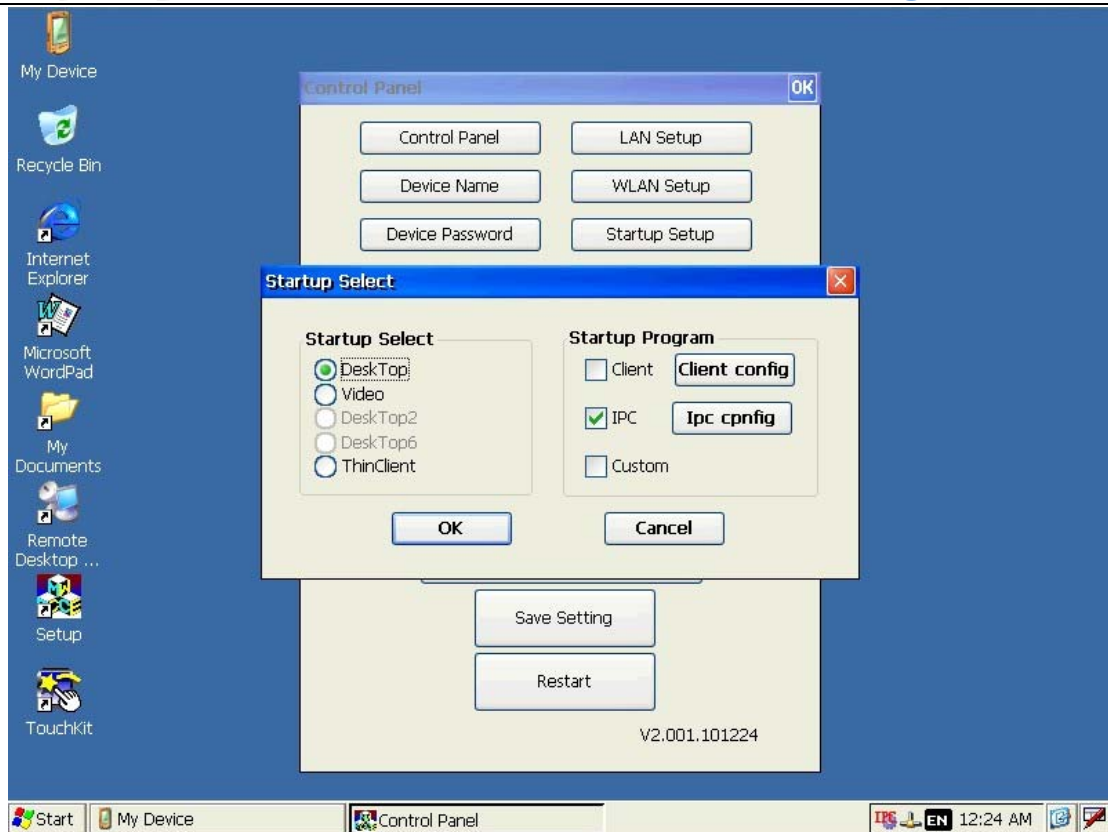


### 6.11 Setup for Windows 7/Windows 2008

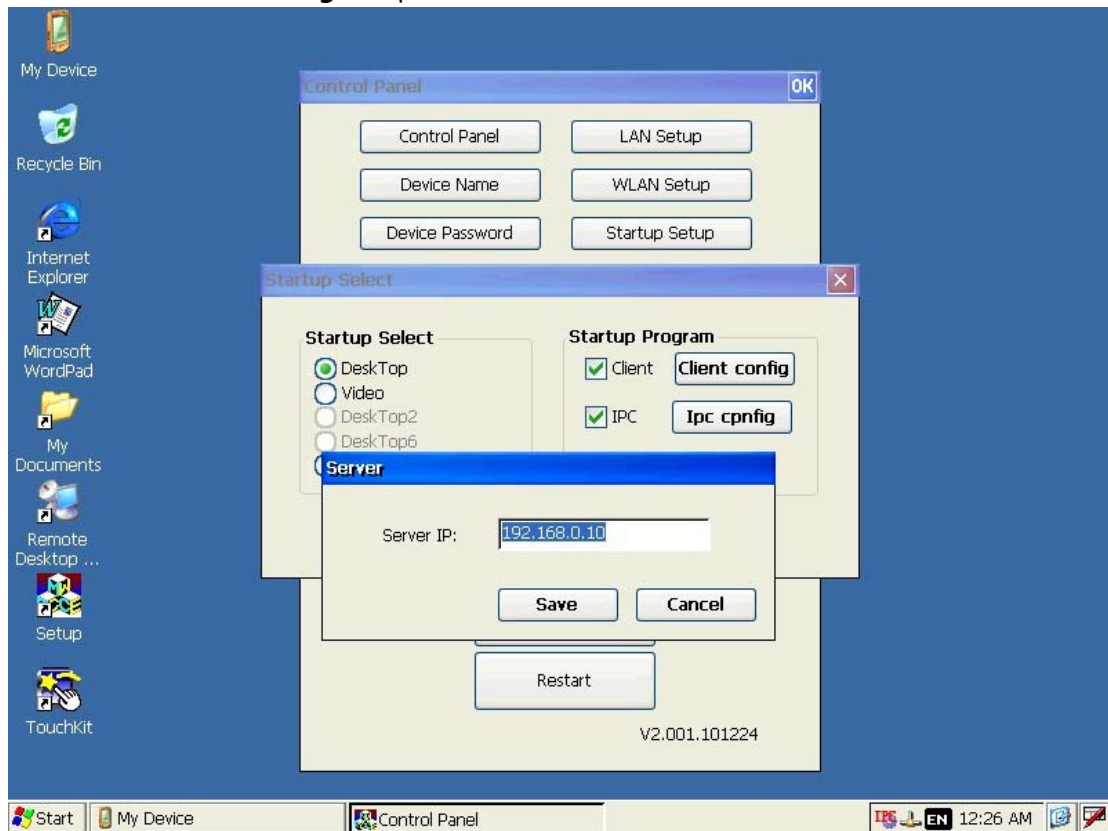
1. Click "**system setup**"; go into the face of the system setup.,



2. Click "**Startup select**" to setup boot program



3. Select "Client", click "Client Config", input the IP address of Host.



5. Run "X:\Multiuser\Terminal Server.exe" when start the host.

data.b	2010/12/16 11:52	B 文件	1 KB
ipcviewer.exe	2010/5/7 15:49	应用程序	220 KB
Terminal Server.exe	2010/6/3 18:15	应用程序	404 KB

