

---

## JF-ETP-TY110W Cloud Terminal

Share **1** PC with up to **N** users



### Main advantages

#### Cost saving

Cloud Computing Terminal cost only 10% to 20% of a typical desktop computer. The design of integrating hardware and software together gives Cloud Computing Terminal unparalleled advantage in cost saving. VDP technology and the free software enclosed in the product can make the HOST resources shared by all users easily. Now you don't need to purchase Windows permission, a lot of hardware and software cost can be saved. The only thing you need to do is connecting your mouse, keyboard and monitor to the Cloud Computing Terminal, then you can surf the internet, and do your office work and so on.

#### Unified management and minimal maintenance

All the upgrading and maintenance are done on the HOST (Server), no need to care about the Cloud Computing Terminal. Real zero maintenance for Cloud Computing Terminal.

#### Safe from internet virus

Data stored in the HOST (Server), not the Cloud Computing Terminal, so it is very safe. And Cloud Computing Terminal is impossible for virus infection, so it is perfect in antivirus function.

#### Smart hardware design

The smart Cloud Computing Terminal only takes 115\*115\*26mm room, with the mounting bracket enclosed in the package; you can fit the Cloud Computing Terminal to the backside of the LCD monitor, and so it takes no extra room, makes your desk tight and beautiful.

#### Going green

Cloud Computing Terminal cost only 5 watts power consumption, running without cooling fan. No noise and low radiation, very green and environmental.

---

## No installation and limitless connection

Only need 10s to start, no need to install device on host computer. No distance limit to connect to other computer, use IP address, you can even connect to other over sea's computer!

## Technological innovation & characteristics

### Dual-working style

#### 1. Sharing work mode

With VDP technology, you can set up sharing cloud computing network, the desk of Cloud Computing Terminal use the resources of the main HOST, and run remote desktop. It works just like a full typical desktop computer.

#### 2. Mini PC mode

Cloud Computing Terminal can work as a stand-alone minicomputer. You can surf internet, enjoy cloud computing, run simplify Office software and even download data to your USB flash memory or other moving HDD.

### 10-second Quick Start function and nice print function supported

Compared to the long time starting process of traditional desktop computer, Cloud Computing Terminal may bring you super surprise; it takes only 10 seconds to start.

Cloud Computing Terminal support printing function under both working modes, overcomes the traditional limitations of network computer.

Cloud Computing Terminal support WIFI.

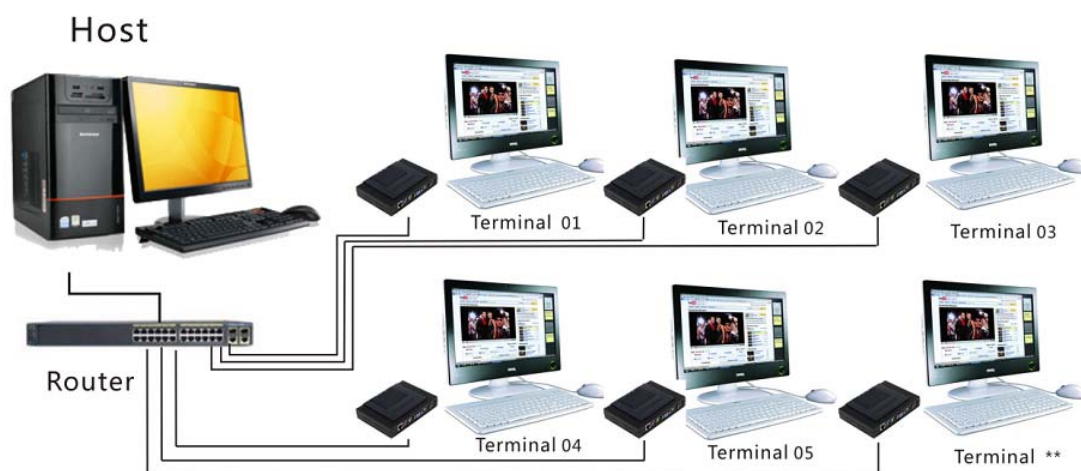
### High resolution display capabilities

Cloud Computing Terminal support up to 1280\*1024 or 1440\*900 display resolution, so we can enjoy the same vision enjoyment.


## Particularly suitable user group

1. Window service industries: Banking, Taxation, Insurance, Securities, health, etc.
2. Education field: Network classrooms, Libraries, Student hostels, etc.
3. High security requirements agencies or departments: Design Institute, Government Departments and the company's R&D department, etc.
4. Public: Airports, Railway stations, Streets, Offices, etc.
5. Hotels: with Cloud Computing Terminal, you don't need to worry for customers' demolition and replacement of the HOST computers.
6. Customers who want a machine purely used for surfing.
7. Others, like real estate business, convention centers, exhibition halls, etc.

## Network connection



## JF-ETP-TY110W ACCESS TERMINALS Datasheet

Hardware	
Size	Access Device: 115*115 *26 mm    Shipping Size: 138*138*98mm
Weight	Access Terminal: 180g Shipping Weight (includes power adapter, packaging, documentation, etc. ): 400g
Power Supply	Input: 100-250 VAC, 50-60 Hz;    Output: 5 VDC, 2 A Nominal consumption: 5 Watts
Front LED Indicators	Power: connection to power supply    LAN: connection to network Ready: connection to host PC
Rear Ports	 <p>01 – On/Off Power Switch    04 – Video port 02 – DC Power Input    05 – Microphone in 03 – LAN port (RJ45)    06 – Speaker Out 07 – 3 USB 2.0 Ports, Through USB converters connected PS / 2 mouse and keyboard</p>
Connection to Host PC	Onboard LAN 10/100 Mb/s connection or WIFI
Video Resolution	Max 1280*1024, 16bit/64K colors; Widescreen 1440*900 support
Audio	Stereo output via microphone and speaker port
CPU	Onboard ARM926EJ 533MHz
Memory	Onboard 32MB RAM
Storage	Onboard 64MB Flash

Firmware feature	Windows CE 5.0 integrated RDP protocols, Support system upgrading.
USB	3 USB Port, USB Wi-Fi, USB touch screen.
<b>TERMINAL SERVICES SOFTWARE</b>	
Max # Users Per PC	100 users* when using a server host OS (i.e. Windows Server 2003/2008) 30 users when using a desktop OS (i.e. Windows XP/7)
User Software	terminal services software
Supported Operating Systems	Windows XP, Windows Server 2000/2003, Windows Vista, Windows 7, Windows Server2008,, Linux and all other OS which has terminal working permission.
<b>SYSTEM REQUIREMENTS AND OPTIONS</b>	
Kit Contents	TY110W Kit includes access terminal, power supply, software installation & user's guide and other peripherals are NOT included and must be purchased separately.

- The number of users on individual host will depend upon the host system capabilities as well as the applications used and performance expectations for those applications. It is recommended that new customers test their application(s) before adding additional users.
- Does not support 3D games or full screen home theater video applications.
- Application software and OS licenses for the host PC may be required by the respective software vendor and must be purchased separately.

